



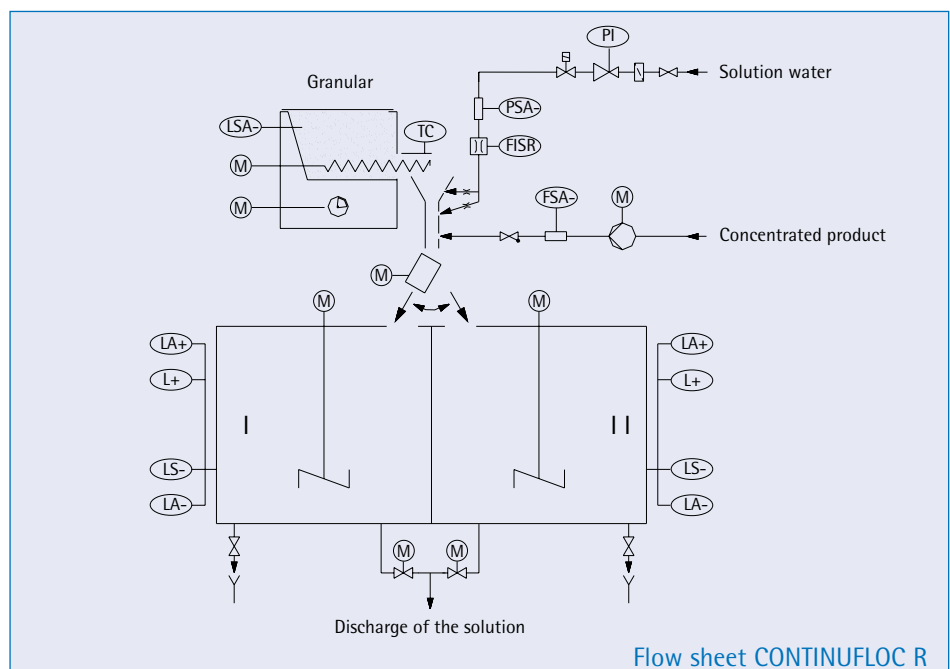
CONTINUFLOC R

Solution and dosing system

Fully automatic two-chamber pendulum system for granular and concentrated liquid polyelectrolyte

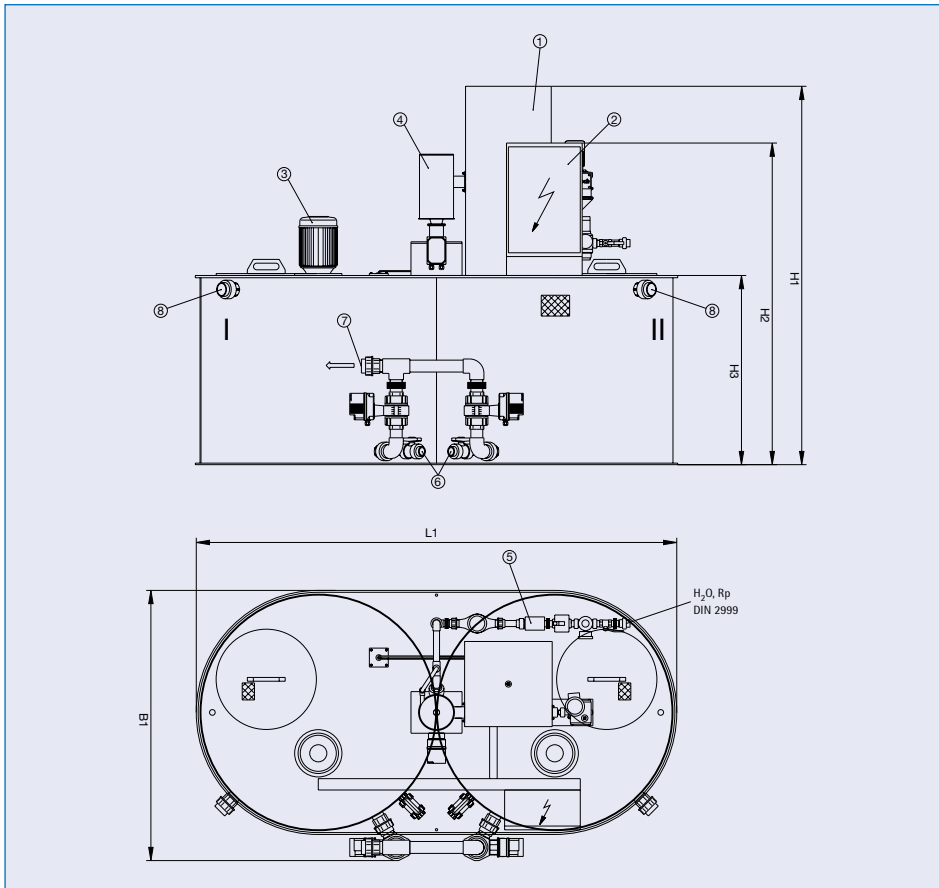
- Capacity (selectable): from max. 1,350 l/h to max. 12,000 l/h of prepared solution
- Concentration (adjustable): from 0.05 to 1.5% at a viscosity of 2,500 cP maximum (in case of gear driven agitators approx. 5,000 cP).
- Make-up capacity: depends on the maturity time. The capacity indicated for each system should not be exceeded.

Components and method of operation as in the "CONTINUFLOC R" drawing. The system is supplied completely with switch cabinet, wiring and piping. Various loading systems for granulate can be supplied on request.



Dimensional drawing CONTINUFLOC R

- 1) Dry material feeder
- 2) Switch cabinet
- 3) Agitator
- 4) High-capacity disperser
- 5) Water supply unit
- 6) Drain
- 7) Discharge
- 8) Overflow



Type	*) [l/h]	G [kg]	P [kVA]	Rp	6 [DN]	7 [DN]	8 [DN]	H1 [mm]	H2 [mm]	H3 [mm]	L1 [mm]	B1 [mm]
1000 - V6 R	1350	200	3,5	3/4"	32	32	32	1760	1510	760	1960	1120
2000 - V6 R	3000	280	3,8	1"	32	50	50	2000	1700	1000	2540	1435
3000 - V6 R	3200	315	4,0	1 1/4"	32	50	50	2500	2200	1500	2540	1435
4000 - V6 R	5200	380	4,5	1 1/2"	32	65	50	2500	2200	1500	2905	1635
6000 - V6 R	9000	650	5,5	2"	50	65	65	2610	2200	1500	3570	2000
8000 - V6 R	12000	670	6,5	2"	50	80	65	3100	1970	2000	3585	2050

*) max. output

Dimensions and indications of weight are approximate dimensions.

Alltech Dosieranlagen GmbH

Rudolf-Diesel-Straße 2

76356 Weingarten

Germany

P.O. Box 120

76352 Weingarten

Germany

Phone: +49 | 72 44 | 70 26-0

Fax: +49 | 72 44 | 10 53

E-mail: info@alltech-dosieranlagen.de

Internet: www.alltech-dosieranlagen.de

Alltech
Dosieranlagen
mit Know-how