



(Lens not supplied with camera)

### CoVi EVQ-1000™ Revolutionizing Surveillance Video Quality

CoVi Technologies' award winning EVQ-1000™ camera sets a new standard of quality and performance for analog video surveillance. The EVQ-1000 utilizes a 1/2" format, progressive scan, High Definition (HD) sensor with unique Digital Signal Processing. The result is a revolutionary combination of image quality, dynamic range and output viewing options never before available in a fixed camera.

### Resolution: The Foundation for Effective Surveillance

Effective video surveillance requires the capture of details that enable a positive identification of a person or object. Until the EVQ-1000, CCTV cameras provided less than 1/3 the detail of the CoVi progressive scan 1280 x 720 HD sensor.

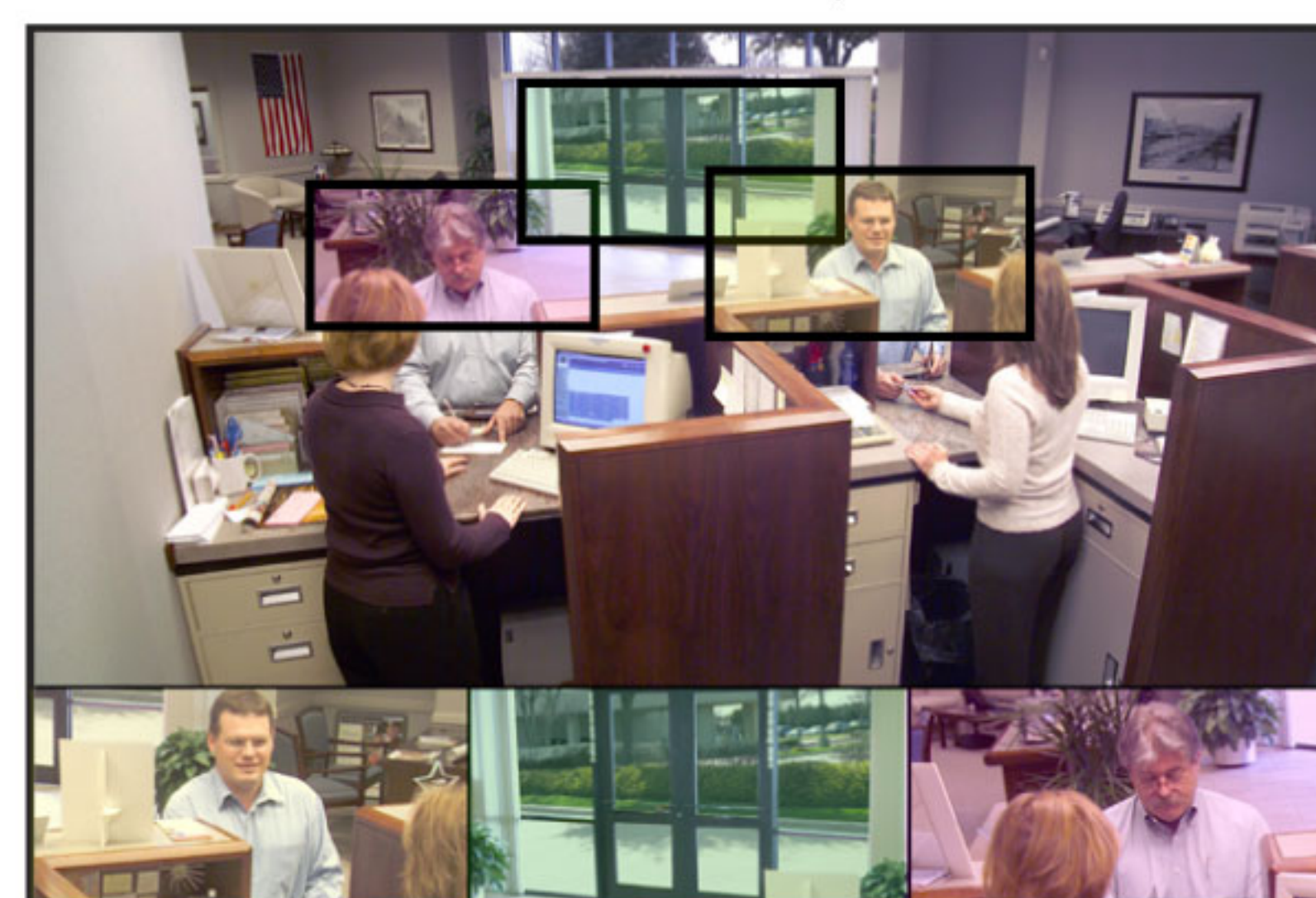
Utilizing proprietary HD to NTSC/PAL digital processing, the CoVi MultiView patent pending output provides a widescreen HD image in standard analog format (NTSC or PAL.) This feature allows users to capture a wider field of view, higher resolution outputs and multiple zoom views extracted from the overall HD scene.

### MultiView™ & ePTZ: Situational Awareness with Detailed Identification Capability in a Single Camera

The EVQ-1000 provides two independent NTSC or PAL video outputs: MultiView and ePTZ.

MultiView provides a full-field view with up to three additional zoom-under-picture (ZUP patent pending) views. The wide field-of-view provides total situational awareness of a scene while each ZUP can be set to view a critical area of interest within the main image, such as license plates, cash drawers or head-and-shoulders in a doorway.

MultiView Output



ZUP 1      ZUP 2      ZUP 3  
Picture for demonstration purposes only.

The ePTZ (Electronic Pan-Tilt-Zoom) output emulates features of a traditional mechanical PTZ camera, but with two important advantages. First, the ePTZ output is extracted from a full resolution, wide field of view HD source image. This enables both the controlling and monitoring of the ePTZ output while simultaneously retaining situational awareness of the MultiView output. This output provides up to 4x non-pixelated zoom with a total zoom ratio of 16x.

## EVQ-1000™

- Capture greater details with highest resolution analog image
- Wider field of view coverage
- Situational Awareness and Identification capability in 1 camera
- Control and tracking capabilities with greater reliability (no moving parts to wear out)
- Handle difficult lighting conditions with high dynamic range

### High Dynamic Range: Quality Video in Challenging Lighting Conditions

CoVi's high definition sensor captures light over a very wide dynamic range. The sensor output is then digitally processed for optimum detail enhancement and viewing clarity by CoVi's advanced digital video algorithms. This enables the viewer to see detail in dark and bright areas of high-contrast scenes, without false color artifacts or extreme noise common to alternative solutions.

The EVQ-1000 has a servo controlled IR block filter permitting high performance day and night viewing, further extending the utility and cost effectiveness of the camera for users requiring 24 hour surveillance.

### Installation, Management and Control: Assuring Security, Controlling Costs

CoVi has designed the EVQ-1000 and Camera Management Utility Software (CAMU) to minimize installation, configuration and time

Flexible configuration of camera parameters and ZUP settings can be accomplished via the included CAMU software, PTZ controllers and handheld programmers.



# TECHNICAL SPECIFICATIONS

## GENERAL

Imaging Device	Progressive Scan 1/2" High Definition Sensor
Active Pixel Array	1280 H x 720 V
Sensor Resolution	800 TVL
Video Signal Format	NTSC and PAL
Dynamic Range	83dB-125dB (16 bit processing)
Signal-to-noise ratio	> 72dB
Min. Illumination	0.1 Lux at f1.2 at scene w/ 75% reflectance
Backlight Compensation	Low, Medium, High
Shadow Detail	On/Off
White Balance	Auto or Manual presets
IR Block Filter	Servo-controlled for day/night performance
Synchronization	Internal (crystal) or External

## ELECTRICAL

Voltage Requirement	24 VAC, 12 VDC auto sensing
Power Consumption	8 Watts
Video (1, 2)	2 BNC
RS-485 (5)	2 pin Molex (TX+/-)
RS-232 (6)	DB9 Female
Power (4)	2 pin Molex
Addressing (3)	10 position dipswitch
Power LED (7)	On, Off

## MECHANICAL

Camera Mount	1/4" x UNC-20 threaded mounting adaptor, attaches to top or bottom
Lens Mount	CS or C Mount with adaptor (included)

## PHYSICAL

Camera Size (w/o lens)	2.91" x 2.91" x 3.81"
	74mm x 74mm x 109mm
Weight (w/o lens)	13.4 oz (.38Kg)

## ENVIRONMENTAL

Operating Temperature	0° C to 50° C
-----------------------	---------------

## SUPPLIED ACCESSORIES

CAMU CD	Enclosed with CoVi Camera Management Utility for Windows XP
---------	---

## MODEL

1000-01 NTSC Black
1000-02 NTSC Beige
1000-03 PAL Black
1000-04 PAL Beige

## CERTIFICATIONS/PATENTS

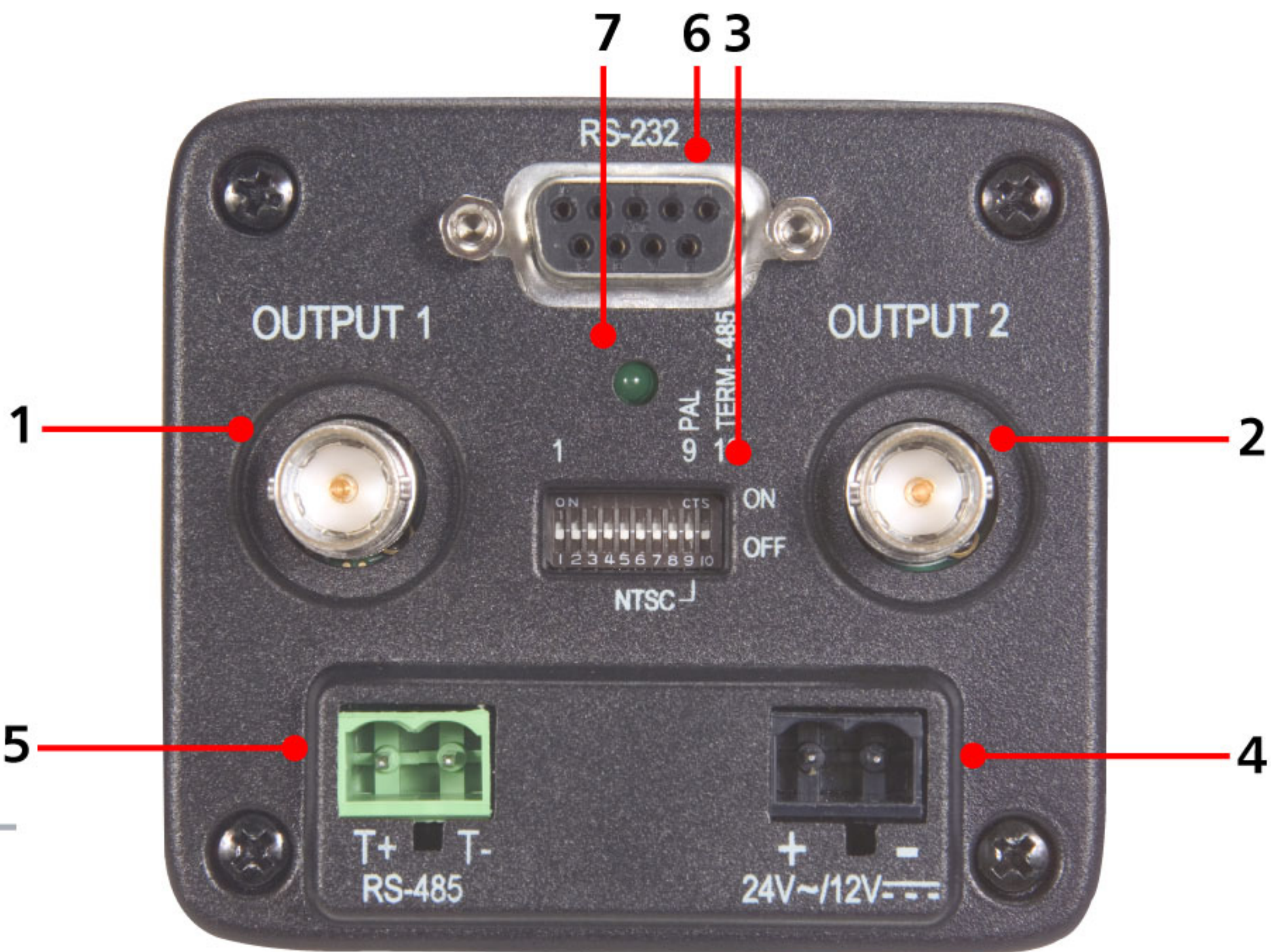
FCC Class B
CE Class B
UL Listed
UL/C Listed

## WARRANTY

2 years
---------

## OPTIONAL ACCESSORIES

Megapixel Lenses	1/2" or 2/3", manual iris, mega- pixel resolution lenses; Recommended lenses can be found at <a href="http://www.covitechnologies.com/lenses">www.covitechnologies.com/lenses</a>
RS-485 Programmer	<a href="http://www.covitechnologies.com/accessories">www.covitechnologies.com/accessories</a>
EVQ Packages	Outdoor, Vandal Resistant, License Plate (ANPR)



### Connections/Switches

Back panel of EVQ-1000™

