



AXIS 231D Network Dome Camera

*Superior pan, tilt and zoom control
over IP networks*

The AXIS 231D Network Dome Camera offers superb pan/tilt/zoom control over IP networks such as a LAN or the Internet. It is ideal for demanding surveillance and remote monitoring applications.

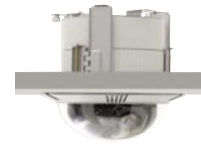
The AXIS 231D delivers superior quality Motion JPEG and MPEG-4* video in light conditions down to 0.3 lux. It features an 18x optical zoom, autofocus lens, with a fast and accurate pan/tilt function. As with all true domes, it enables a continuous 360-degree pan operation and supports 20 preset positions and 1 sequence (guard tour). The AXIS 231D offers 4 alarm inputs and 4 alarm outputs, in addition to advanced event management functionalities. It also provides a complete set of security features such as HTTPS and IP address filtering.

The AXIS 231D is perfect for professional security installations at airports, railway stations and prisons, as well as at warehouses, manufacturing facilities, shopping centers and school campuses.



- Full frame rate: up to 25/30 frames per second for all resolutions
- Support simultaneous streams of Motion JPEG and MPEG-4*
- Built-in 18x optical + 12x digital zoom lens with auto focus
- I/O: 4 alarm inputs + 4 alarm outputs
- HTTPS for encrypted communication

* MPEG-4 available as a free software upgrade in Q1 2005



General

- Networked dome camera for remote pan/tilt/zoom control
- Support simultaneous Motion JPEG and MPEG-4*
- Built-in 18x optical zoom lens

Functions

- Provide 20 presets and 1 sequence
- Scheduled and triggered event functionality with preset call-up and alarm notification via e-mail, TCP, HTTP and upload of images via e-mail, FTP and HTTP
- 9 MB pre and post alarm memory providing approx 1.5-2 min of video (CIF images, 4 frames per second, medium compression)
- Image customization with text, time/date and image overlay
- Up to 20 simultaneous users
- Built-in Web server

System Requirements

The following specifications apply to the use of browser-based viewing. When using an application software, please refer to the specifications provided with the software.

Hardware

CPU:

- Pentium 4, 1 GHz or higher
- 128 MB RAM
- Meeting the specification for selected operating system and browser

Graphic card:

- AGP card with Direct Draw support and 16 MB video memory (32/64 MB recommended for high resolutions/color depths)

Software

Supported operating systems:

- Windows XP, 2000, NT4.0, ME and 98, Linux and Mac OS X

Supported Web browsers:

- Windows - Internet Explorer 5.x or later and Mozilla 1.4** or later
- Linux - Mozilla 1.4** or later
- Mac OS X - Mozilla 1.4** or later and Netscape 7.1** or later

Hardware & System

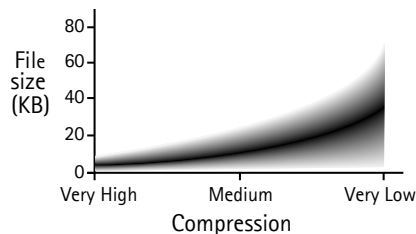
- Sony ExView HAD 1/4" CCD
- Motorized zoom lens 4.1 – 73.8 mm, F1.4 – 3.0
- Horizontal viewing angle: 48 – 2.8 degrees
- Auto focus: 18x optical + 12x digital
- Pan/tilt speed: < 360°/sec
- Tilt range: < 0° to -90°
- Pan range: 0° to 360° continues rotation
- AXIS ETRAX 100LX 32-bit RISC CPU
- AXIS ARTPEC-2 video compression chip + 8 MB RAM
- Linux 2.4 kernel
- 32 MB RAM and 8 MB Flash
- Electronic shutter 1 – 1/10.000 sec
- White balance: ATW/AWB/Manual/Indoor/Outdoor

Connections

- Network: 10BaseT/100BaseTX Ethernet networks (RJ-45)
- I/O: 4 alarm inputs + 4 outputs (terminal block)
- Power consumption: 24 V AC, max 1 A, external power supply (24 V AC/24 VA) included

Video

- Equivalent to at least 470 TVL (PAL) / 460 TVL (NTSC) analog video
- Minimum illumination: 0.3 lux at F 1.4 (30 IRE)
- Frame rate: up to 25/30 frames per second in all resolutions
- Video compression: Motion JPEG and MPEG-4* (ISMA compliant, Part 2, Advanced Simple Profile at Level 5)
- Supports 10 different resolutions in both PAL and NTSC
- Max resolution: 768x576 (PAL)/704x480 (NTSC)
- Min resolution: 176x144 (PAL)/160x120 (NTSC)
- 10 video compression levels



The file size of a JPEG image depends on factors such as selected resolution, compression level and the actual content of the image.

Security

- Multiple user access levels with password protection
- IP address filtering
- HTTPS Encryption

Firmware updates

- Flash memory allows firmware updates over the network using HTTP or FTP over TCP/IP. Firmware upgrades are available from www.axis.com.

Custom Applications

Designed for system integration and custom application development by providing:

- AXIS HTTP API
- AXIS Media Control SDK
- Embedded scripting support
- Customized HTML pages

Operating Conditions

- Temp: 5-50 °C (41-122 °F)
- Humidity: 20-80% RHG

Dimensions and Weight

- Height: 230 mm (9.0")
- Diameter: 144 mm (5.7")
- Weight: 1.93 kg (4.3 lbs) excl. power supply

Approvals

- EMC:
 - CE Compliant according to: EN55022/1998 Class A, EN55024/1998, EN61000-3-2:2000, EN61000-3-3:2000
 - FCC Subpart B, Class A
 - VCCI Class A
 - C-tick AS/NZS 3548
- Safety: EN60950

Included Accessories

- Power supply
- Hard ceiling mounting bracket
- Drop ceiling mounting bracket
- User manual

Available Accessories*** (not included)

- AXIS 23xD IP66-rated Outdoor Housing
- Various mounting brackets for outdoor housing
- AXIS Camera Explorer – basic software for viewing and manual recording of multiple cameras
- AXIS Camera Recorder – viewing and event-based recording of up to 16 cameras. Search tools and motion detection alarm included
- AXIS Camera Station – software for recording and management of up to 25 cameras. Advanced search tools, motion detection alarm and remote client included

* MPEG-4 available as a free software upgrade in Q1 2005

** Limitations in functionality

*** See separate datasheets for more information

This product includes software developed by the OpenSSL Project for use in the OpenSSL Toolkit. (<http://www.openssl.org/>)

www.axis.com