

Graphic-DMM

5.5 Digit CF-DMM



The *Graphic-DMM* is a new concept in test equipment that allows a PDA, Notebook, Tablet-PC and all other Systems equipped with a CF or PCMCIA slot to be turned into a dual channel *Graphic Digital Multimeter* with sophisticated analysis capabilities.

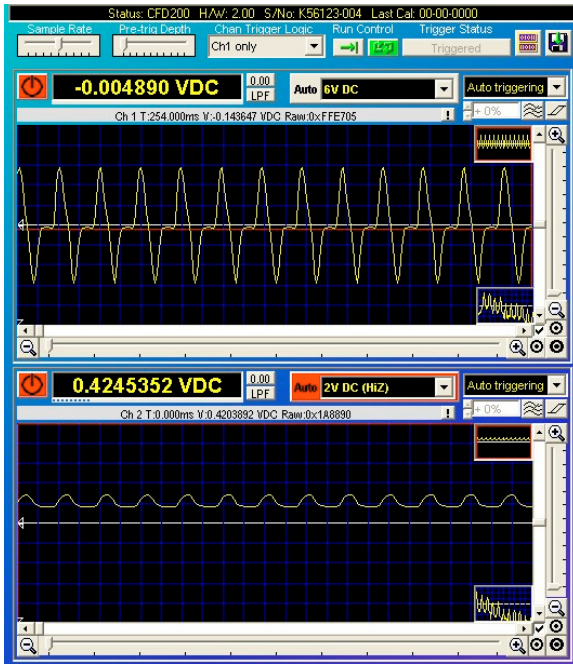
SmartAnalysis software facilitates step-by-step fault investigation with instant display of results and an interactive diagnostic guide. With the *Graphic-DMM* it is possible to integrate multiple measurement functions into a single hardware/software platform, providing high-level analysis features and a small, lightweight and portable unit.

- **Dual Channel 5.5 Digit Auto-ranging DMM for CF and PC-Card slots**
- 650V max input voltage
- Full Galvanic Isolation to Host and channel-to-channel
- Dual channel Scope function up to 40 kS/s
- Data logging capability
- Enables *SmartAnalysis* techniques
- Customisable application software
- Optional: Winows CE, Pocket PC, VB, VC/C++ and LabVIEW for PDA

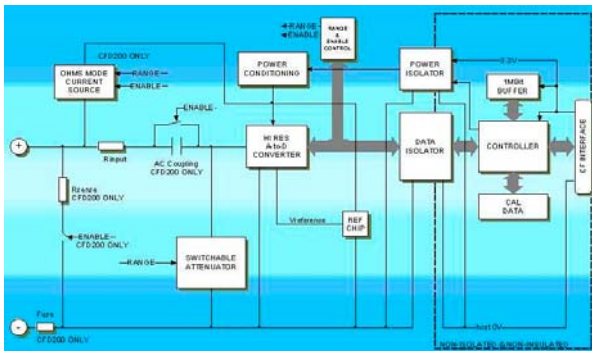
The *Graphic-DMM* is a general Digital Multimeter Compact Flash Card that has the following features:

- Dual Channel Isolated 5.5 Digit DMM
- VDC/VAC/mADC/mAAC/Ohms/Diode and Continuity modes, independent per channel with DC/AC coupling
- Dual Scope mode using 128K byte hardware buffer, with 8-bit triggering, pre/post trigger, channel trigger logic
- Up to 40 kS/s sample rate per channel, 7 kHz analogue BW
- Channel activity LEDs shows power status
- Uses standard 4mm shrouded banana plugs
- Fully protected against over-voltage and over-current
- Low power consumption, typ. 350mW
- Compatible with CF type I and PCMCIA (CF↔PC-CARD adapter)
- Optional: Support for Windows CE, 2000, XP, PocketPC, VB, VC/C++ and LabVIEW for PDA

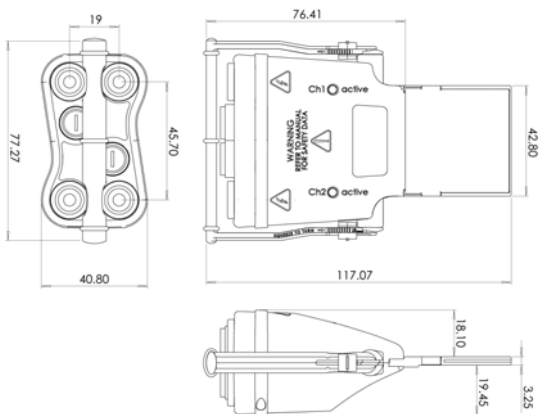
Software – Pocket PC & Windows XP



Architecture Diagramm – One Channel



Dimensions



Summary Specifications

- Dual channel 5.5 digit resolution, up to 40,000 Samples/sec/ch
- Dual independent 300V Cat II DMM channels. 500V Cat I
- Separate synchronised 5.5 digit ADC per channel
- DC Volts: 650V, 60V, 6V, 2V(HiZ), 0.01% Accuracy
- AC RMS Volts: 440V, 40V, 4V True RMS, 0.25% Accuracy
- DC Current: 350mA (Fused 400mA), 0.25% Accuracy
- AC Current: 250mA RMS (Fused 400mA), 0.25% Accuracy
- Isolation 1500V to Host and between channels
- Cat II Inputs, shrouded 4mm terminals
- DC Coupling BW: DC to 7kHz typ.
- AC Coupling BW: 2Hz to 7kHz typ.
- Extended CF type I card with impact resistant housing.
- In combination with CF ↔ PC-CARD adapter also compatible with all PCMCIA and CardBus slots



HACKER – Datentechnik
 Leibnizstrasse 3
 D-53498 Bad Breisig (Germany)
 Tel.: +49-2633-456511
 FAX.: +49-2633-456517

<http://www.hacker-technology.com>