

TVR1 Door lock

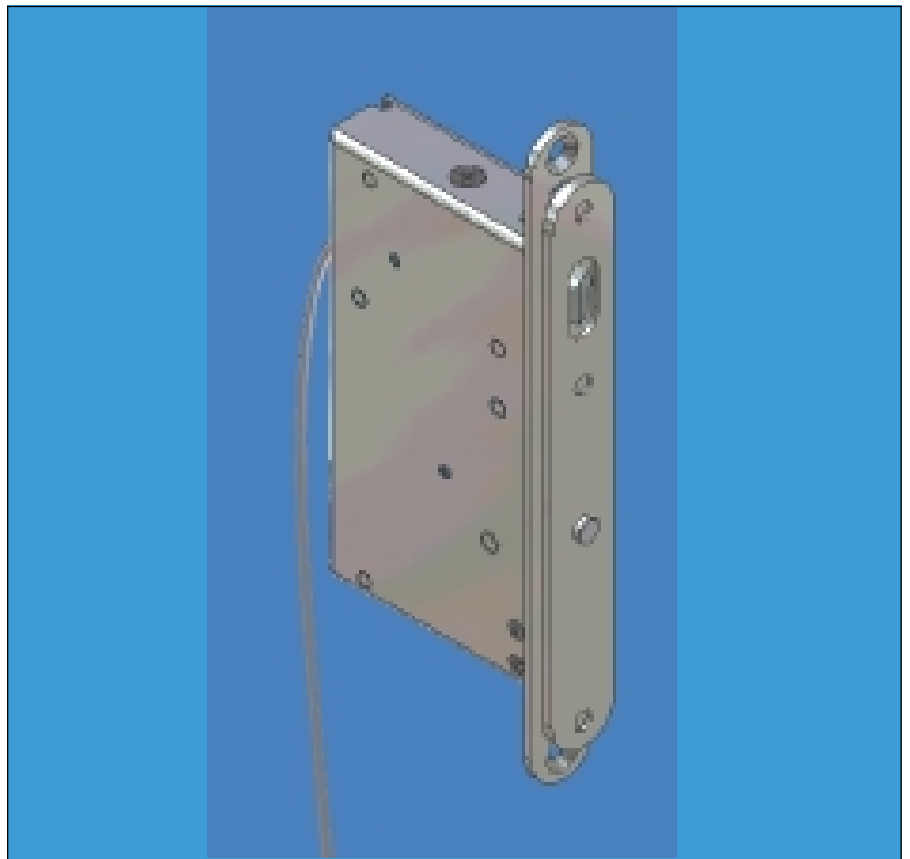
Locking unit for the TVS door locking system and the DICTATOR interlock control system

The **TVR1 door lock** is one of the possible locking units to be used in the TVS door locking system for emergency exits. Its main feature is its **very low power consumption**. The singular combination of an electromagnetic lock and a **sturdy locking bolt** offers highest possible security. Due to the concealed installation the TVR1 door lock is to a large extent **safe from damage and manipulation**.

The TVR1 door lock **has a double security** against breaking in and manipulation. It controls amongst other things that the door is really locked with the bolt.

When pressing the Emergency-Open switch the current supply to magnet in the TVR door lock is cut off. The bolt springs back even under a load of up to 3000N pressing against the door. It resists a pressure of 6000N, when somebody tries to break the door from the outside. A maximum of 2 units can be used in one door.

The TVR1 door lock has been tested together with the TT1 control terminal and is **approved for emergency exits** (certificate no. P-2136/04, TÜV Thüringen).



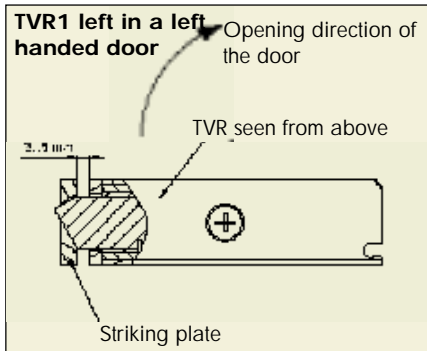
Technical Data

Voltage	24 VDC \pm 15 %
Power consumption	max. 80 mA when locked
Principle of working	unlocking without current
Duty cycle	100 %
Surrounding temperature	-10°C to +40°C
Protection	IP30
Safe unlocking up to a load of	3.000 N (in exit direction)
Locking force	6.000 N (against breaking the door open)
Position of installation	vertical or horizontal (above the door)
Gap between striking and front plate	3 to 5 mm (4 mm recommended)



TVR 1 Door lock

Installation



The locking unit of the TVR1 door lock is inserted into the door frame, the striking plate into the door. It is normally installed vertically in the lateral frame of the door. The TVR1 door lock can also be installed in the frame above the door, with the bolt showing downwards. The door lock requires about 85 mm in depth.

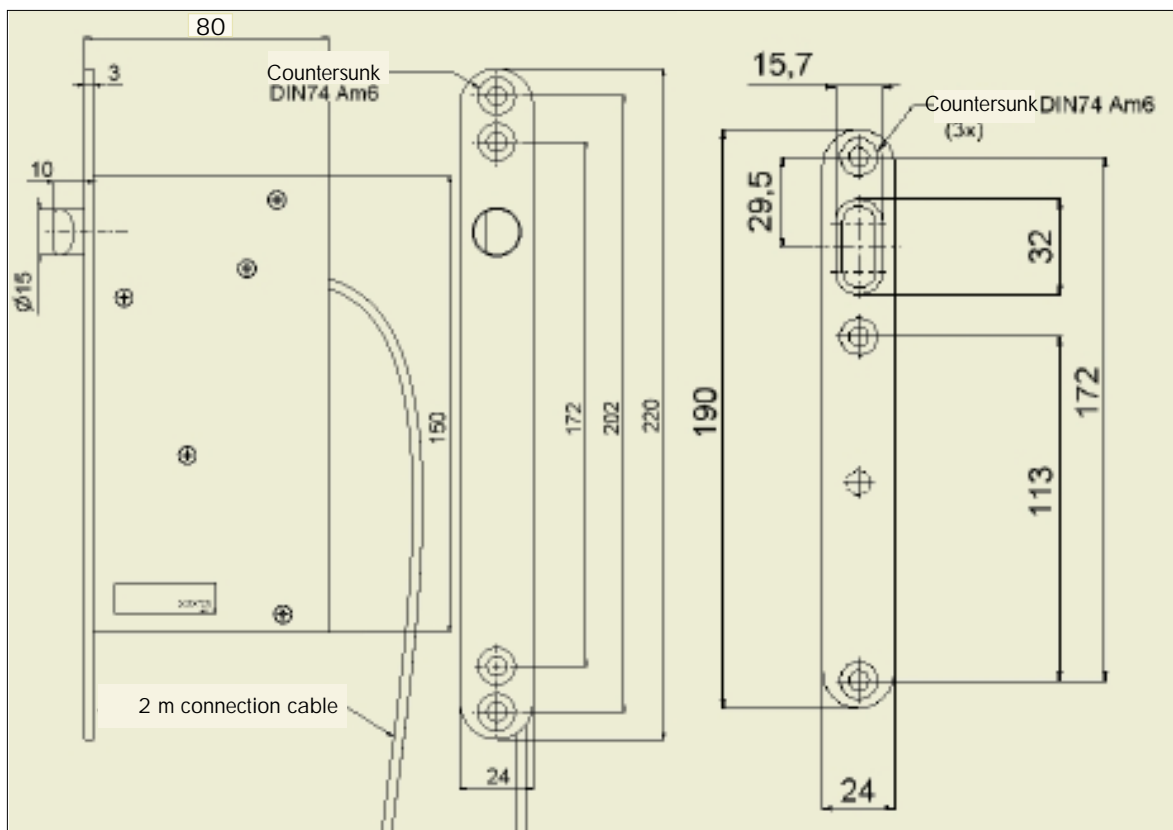
It must be made sure that the gap between the locking unit and the striking plate is no less than 3 mm and no more than 5 mm. The striking plate has to be positioned in the door so that the bolt of the locking unit is centered exactly in the respective hole of the striking plate.

The bolt has got bevels on both sides. They permit a normal closing and a reliable opening without current even with a load pressing on the door. Due to the different bevels there are different types for right- and left-handed doors.

Note: the short bevel must show in the opening direction of the door, the longer one in closing direction (see illustration at left).

If the TVR1 door lock is to be used in emergency exit doors that are at the same time fire protection doors, special regulations must be observed. Please contact us in this case.

Dimensions



Order Information

TVR1 door look, for left handed doors	Part no. 710 750
TVR1 door look, for right handed doors	Part no. 710 751

If there is not enough space available to install the TVR1 door lock, the DICTATOR bar magnets are an alternative. When using them in the DICTATOR TVS door locking system for emergency exits please use only the approved types. Further information on other components of the DICTATOR door locking system are to be found starting on page 08.003.00.