

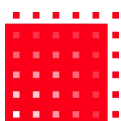


Glassware Drying Oven



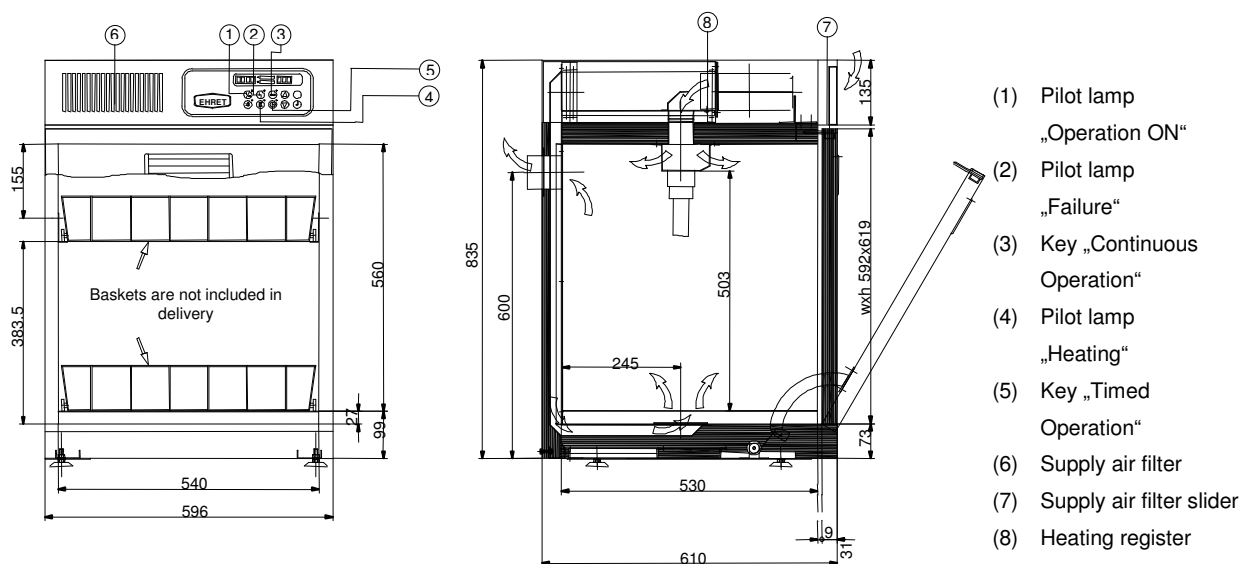
TK/L G 154

- Temperature range from 5°C above ambient temperature up to +90°C
- Suitable for upper and lower baskets, injector and pipette trolleys (i.e. Miele type G 7783/7883)
- Entirely made of stainless steel
- Drop door to hold baskets and injector trolley
- Filtered intake air, filter class G4 as per DIN EN 779
- Hot air injection from top and bottom
- Two levels for loading, height adjustable
- Soft-touch keyboard with electronic temperature control (max. 90°C) and timer
- Integrated airflow supervision
- Easy pre-filter exchange with open door (fixed behind the control panel)
- Safety standards and precision as per DIN EN ISO / VDE
- Tested, proved and documented quality



Model	TK/L G 154
Outer dimensions (mm) wxhxd (incl. levelling feet and exhaust tube)	596x860x645
Inner dimensions (mm) wxhxd	540x560x530
Volume (l) ca.	154
Pack size (mm) wxhxd	760x1100x770
Gross weight (kg) ca.	100
Net weight (kg) ca.	75
Electric connection (V / Hz)	230 / 50
Electric power (W)	1600
Housing	stainless steel AISI 304
Chamber	stainless steel AISI 304
Pre-filters: filter class (as per DIN EN 779) / separation efficiency (%) at 10µm / at 3µm	G4 / 85-98 / 30-55
Exhaust air supply (mm) Ø	66
Exhaust air speed (m/s)	7
Exhaust air volume ca. (m³/h)	86

Jan/08 Technical alterations reserved.



Functional description:

Pre-filtered fresh air is drawn from the ambient by the blower. It passes the built-in heater and is blown into the chamber from the top and bottom.

Then the air, saturated with humidity, is delivered back to the ambient, or into an exhaust air system through an exhaust duct in the rear of the oven; if connected to an exhaust air system, it must be draught-free.

The heater is situated directly behind the circulation blower.
Fitted with rails for an injector trolley (second tier is adjustable.)