

General data	
Dimensions (W x D x H)	460 x 440 x 135 mm
Set-up plate	380 x 410 mm
Weight	3.200 g

AS 4000.1 Universal attachment

For various types of vessels. Infinitely variable clamping rolls allow universal adaptation to the vessels.

Included with delivery:

1 x Basic holder, 6 x Clamping roll, 12 x Fastening screw



Ident. No.
8022200

AS 4000.2 Fixing clip attachment

For shaking flasks, Erlenmeyer flasks and bottles with a round crosssection (without fixing clips).



Ident. No.
3710100

STICKMAX

New universal adhesive mat for the fixing clip attachments of KS 130, KS/HS 260, KS/HS 501 and KS 4000 i shakers.

- Ideal for frequently changing vessel types and sizes
- Self-adhesive
- Vessels can be easily removed thanks to side tilting movement
- Suitable for disinfection
- Peel-away strength required: 5 N/cm²



Ident. No.
3920000

AS 4000.3 Dish attachment

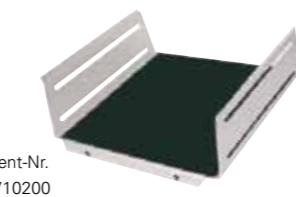
For smooth shaking operations in the low viscosity range, e.g. for cell cultures, nutrient media in Petri dishes, culture bottles and vessels with a low center of gravity. With integrated slip-resistant foil (PP).



Ident. No.
3710000

AS 1.400 Basic holder

Spare for use with universal attachment AS 4000.1.



Ident-Nr.
3710200

AS 1.401 Clamping roll

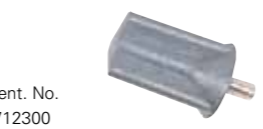
Spare for use with universal attachment AS 4000.1.



Ident. No.
3712000

AS 1.402 Fastening screw

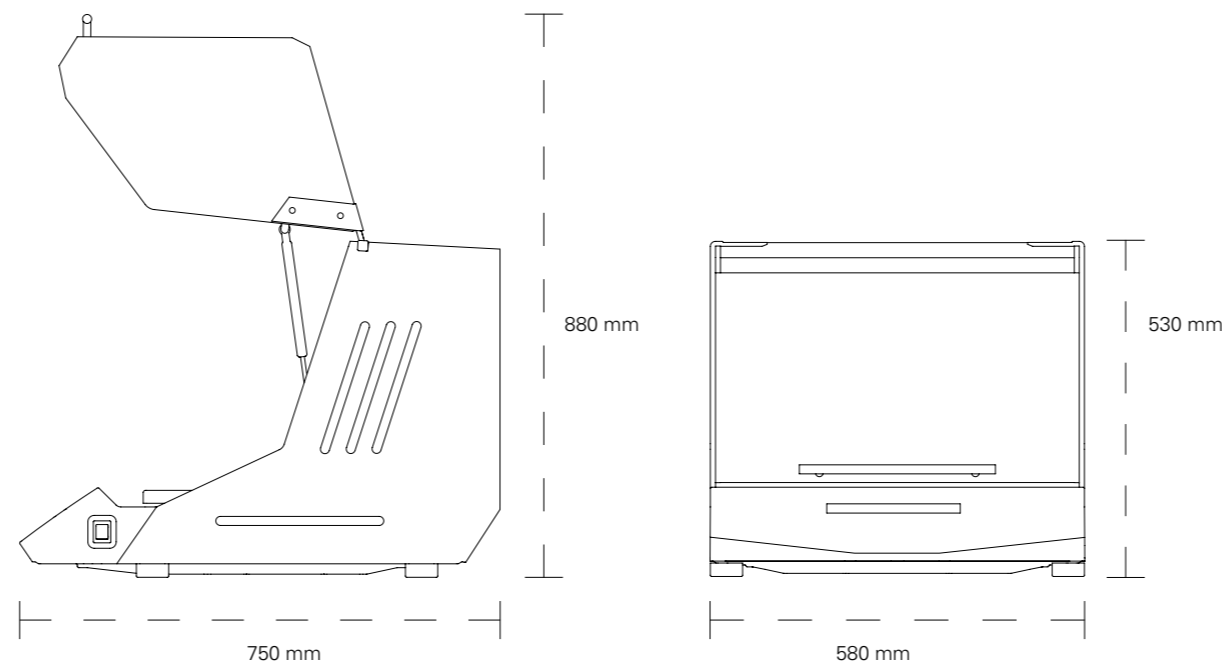
Spare for use with universal attachment. AS 4000.1. Two AS 1.402 fastening screws are required for fastening a clamping roll onto the corresponding basic holder.



Ident. No.
3712300

KS 4000 i control Incubator Shaker

– compact – space-saving – strong in lower rotation ranges



General data	
Dimensions (W x D x H)	580 x 750 x 530 mm
Space required (W x D)	580 x 580 mm
Weight	55 kg

IKA®

KS 4000 i/ic control

2009 The new Incubator Shaker



 Designed to work perfectly

 Designed to work perfectly

IKA®-Werke GmbH & Co. KG · Janke & Kunkel-Str.·10 · 79219 Staufen · Germany
Tel. +49 7633 831-0 · Fax +49 7633 831-98 · sales@ika.de · www.ika.net

Subject to technical changes. Indications not binding for delivery.

KS 4000i control

New incubator shaker with innovative design allowing unattended operation in a temperature-controlled environment.

Junction box in the workspace for connection of an additional temperature sensor e.g. PT 1000.60, for direct temperature measurement in medium

Insulated double wall for constant temperature control

Large LED display:
For speed and time settings
Electronic temperature and speed control
Electronic timer switch

Controls with antimicrobial coating for reduction of bacteria

Ergonomic operating surface

10 Year warranty*

- No spare part costs during lifetime
- No repair costs during lifetime
- * 10 years, wearing parts excluded

- KS 4000 ic control with built in cooling coil for connection to an external cooling unit e.g. KV 600.
- Collecting tray with drain hose on rear of unit
- PT 1000.60 temperature sensor included with unit
- Integrated PID temperature control (use of two PT 1000 temperature sensors)
- Unit switches off automatically if unstable
- Unit stops automatically when hood is lifted
- Simple operation
- All functions can be controlled and documented using the labworldsoft® software
- Low vibration and low-noise operation
- Outstanding stability: Cast aluminium base plate



Absorbed hood movement

Shaking drive

Shaking movement	orbital
Orbital diameter	20 mm
Max. shaking weight (with attachment)	20 kg
Motor rating input / output	82 / 24 W
Power consumption (at 230 V)	1.120 W
Permissible ON time	100 %
Infinitely adjustable speed range	10 to 500 rpm
Speed, time and temperature display	digital

Heating function

Heat output	1.000 W
Temperature range	RT + 5 °C to 80 °C
Temperature stability (200 ml H ₂ O at target T = 37 °C, RT 25 °C)	0,1 K
Timer switch (select minutes / hours)	∞ / 0 to 999 h

Additional cooling function for KS 4000 ic control

Cooling coil	built-in
Temperature range at flow temperature (3 °C) KV 600	RT - 10 °C to 80 °C
Cooling connection for hose	Ø 10 mm
Adapter nipple for hose connection	yes

General data

Dimensions (W x H x D)	580 x 750 x 530 mm
Space required (W x D)	580 x 580 mm
Weight	55 kg
Permissible ambient temperature	15 - 32 °C
Permissible relative humidity	80 %
Protection class acc. to DIN EN 60529	IP 30
Interface	RS 232

KS 4000 i control	220-240 V 50/60 Hz	Ident. No. 3510000
KS 4000 ic control with built-in cooling coil	220-240 V 50/60 Hz	Ident. No. 3510100

Attachments not included - please order accessories as needed



Display



Drainage hose



Insulated double wall