



) EYE-LCD4600M/W-SN

) DESCRIPTION

eyevis' new display versions EYE-4600M/W-SN offer a revolutionary TFT-LCD-based technology. Best image quality, high contrast, high brightness, high resolution, and the ultra-narrow bezel are the main features of these new display modules. The displays has a screen diagonal of 46" with 16:9 aspect ratio, and native WXGA resolution (1366x768 pixel).

The new TFT-LCD screens are cascadable, i.e. they can be combined to build up large screen walls with little gaps between the individual display modules.

This possibility for a large screen construction is absolutely unique in the fields of large screen visualisations. Thanks to the narrow bezel of the displays, the gap between the screens of two adjacent modules measures only **7.3 mm**.

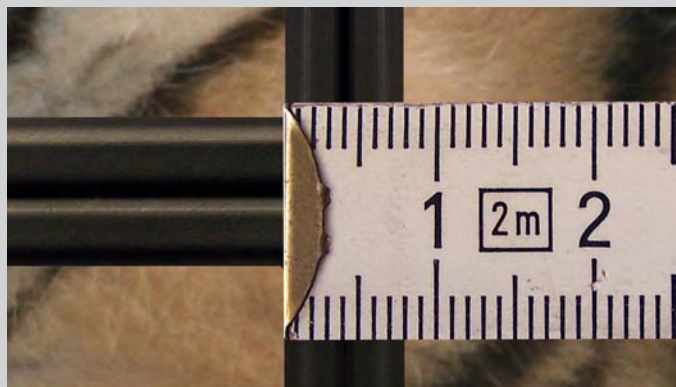
In contrast to plasma displays, which are also available in frameless versions, you do not have the imminent danger of "burn-in" effects with our TFTs. Already after a short representation of a static image these effects occur on plasma displays and cause irreparable damages to the screen. These effects do not happen to TFT screens that easy.

Of course, the EYE-LCD4600M/W-SN have the ultra-thin and slim design that is typical for TFT-LCD displays. This allows their flexible installation in almost every area of application.

eyevis new EYE-LCD4600M/W-SN is especially designed for the use in 'tiled' video wall applications. The displays provide special ventilation ducts for heat dissipation, a decisive feature for avoiding image retention effects on the displays. This cooling concept, as well as several other additional features, makes the displays match the requirements of sophisticated continuous operation.

The displays have a robust powder-coated metal housing, which makes them perfect for the use in any environment. Even regular installing and de-installing of the displays, as on shows and events cannot harm the displays.

eyevis provides all necessary accessories for wall and ceiling installations. Moreover, we offer a range of customised solutions (supporting stands, mobile stands, etc.). Special casings are also available (protection against vandalism, environmental influences, etc.). As a provider of one-stop large screen solutions we also have graphics controllers, wall management software, and a wide range of further accessories.



eyevis LCD Series

) DISPLAY PROPERTIES

Two available versions:

- **"M"-Version:**
With stacking frame for LCD based display walls.
- **"W"-Version:**
Version for wall mounting.

easyMount:

Stackable frames enable quick and simple assembly of display walls

GammaCorrect:

Dynamic adjustment over the complete gamma curve

Internal Split

Controller:

Images scalable over several modules, possible up to a matrix of 10x10 displays

Loop-through for RGB and DVI Signals:

Signal loop from display to display. Your advantage: No additional signal distributors necessary

PIP:

Picture-in-Picture (Video on data representation) on one display; possible with all displays of a display wall.

PSS:

Panel-Security-System. Security features for long-term operation to reduce the so-called image sticking effect.

PSC:

Panel-Self-Control. Provides various functions, such as automatic panel dimming, automatic temperature and ventilation adjustments and emergency cut-out.

Control:

Internal control board enables the addressing and control of all functions.

PDS:

Panel-Database-Solution. Open interface, easy connection to other systems avoids maloperations. User-friendly GUI.

PSM:

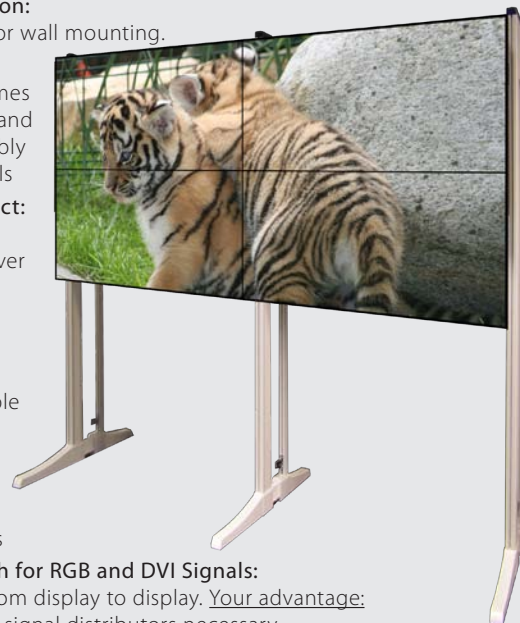
Panel-Status-Monitoring. Comprehensive and detailed survey of the complete system (status messages).

Service-friendly:

Modular design, pluggable component connections results in short MTTR (optional: Front maintenance version).

Optimal Ventilation Concept:

Ventilation ducts for air-supply and exhaust.



) EYE-LCD4600M-SN) EYE-LCD4600W-SN



eyevis LCD Series

) TECHNICAL SPECIFICATIONS

LCD Display

Technology:	S-PVA TFT
Display Resolution:	1366 x 768 Pixel (WXGA)
Pixel Pitch:	0.7455 mm (H/V)
Backlight MTBF:	50 000h

Display Characteristics

Colours:	8 Bit / 16.7 million
Aspect Ratio:	16:9
Viewing Angle:	H 178° / V 178°
Response Time:	8 ms
Contrast Ratio:	3000 : 1
Brightness:	typ. 500 cd/m ² (max. 700 cd/m ²)

Connectors

Inputs:	Power Supply 100-250V 50/60Hz 2 x DVI IN (DVI) 2 x RGB IN (HD15 + DVI) 2 x Composite Video (BNC) 1 x S-Video (Mini-DIN 4pol) 2 x AUX (RJ45 / Mini Jack 3.5 mm) 1 x IR (Mini Jack 2.5 mm) 1 x PS/2 (Keyboard)
Outputs:	1 x DVI-D

Dimensions

Dimensions: (WxHxD)	4600W-SN: 1025.7 x 579.8 x 128.1 mm 4600M-SN: 1025.7 x 579.8 x 298.1 mm
Bezel Width:	2.7 mm bottom/right, 4.6 mm top/left (Screen-to-Screen: 7.3 mm)

Weight

4600W (Display)	30 kg
4600M (Display+Stacking frame)	40 kg

Environmental

Power Consumption:	300 Watt
DPMS:	< 1 Watt
Thermal Load:	230 Watt
Temperature:	typ. 0 - 40 °C
Humidity:	typ. 25 - 60 % (max. 90% RH)

Certificates

EMI	CE
ISO	ISO 13406/2 (pixel error class 2)

Options

Front-Service Option:	Special mechanism allowing front access to the displays. Individual modules can be dismantled even in the centre of modular video walls.
Wall Holder:	VESA 400 x 400 mm / 800 x 400 mm
Ambient Light Sensor:	Automatic adjustment to the ambient light conditions (e.g. day and night adjustment)
Input Option:	Component Video

) APPLICATIONS

- Control Rooms (e.g. for Video Surveillance)
- Board Rooms
- Show Rooms
- Conference Rooms
- POS/POI
- Trade Fairs / Events
- Trading Rooms

) FEATURES

- Almost unlimited number of cascable displays
- "Frameless" design, minimal gaps
- Low installation depth
- Slim design
- Best image quality

) STACKING FRAME FOR M-VERSION



) FRONT-SERVICE OPTION



eyevis GmbH

Hundsschleestrasse 23 • 72766 Reutlingen • Germany
Phone: + 49 (0) 7121 43303 - 0 • Fax: + 49 (0) 7121 43303 - 22
www.eyevis.de • info@eyevis.de

As at: March 2009 • Subject to change!

All trademarks and registered trademarks are the property of their respective owners. Copyright © 2009 eyevis GmbH. All rights reserved.