

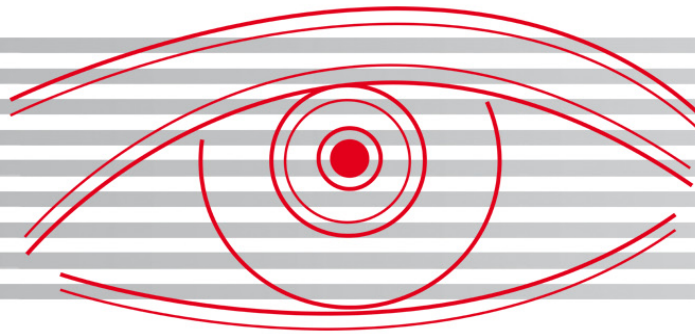
The Netpix Controller Series by eyevis:

High-end Graphics Controller for Large Screen Systems



- ▶ NPX2900L
- ▶ NPX3000L
- ▶ NPX3000
- ▶ NPX3800
- ▶ NPX3800XE





Top performance for optimum picture quality

netpix is a network-based graphics controller for the control of large screen or individual presentations. Thanks to its MultiScreen facility, displays of any size can be achieved. This includes an integrated desktop for network applications, video and RGB sources (analog or IP based). Thanks to the flexible hardware architecture of the netpix technology, it can be easily upgraded with later hardware versions or optional extensions. eyevis customers benefit from the ongoing further development of the netpix technology, which always utilises the most state-of-the-art and reliable hardware components available.

Innovative System Architecture



The new NPX Controllers from the 3800 Series are based on the new Intel® Dual and Quad Technology XEON® CPUs. This new CPU generation provides better performance for the display of high-end visualisation applications compared to other systems.

- QUAD CORE Intel® XEON® technology processors (1x XEON QUAD CORE with 4 x 2,0GHz)
- High-end server components for highest availability
- PCI-X 64bit/100MHz bus with 800MB/s
- Up to 32GB DDR2 SDRAM
- DUAL Gigabit Ethernet

Desktop Management & Operating System



Because of its MultiScreen-ability, any data and application can be displayed simultaneously; they can also be positioned and resized freely. The operator has a big desktop with a very high resolution at his disposal, which will be multiplied by the size of the wall.

- Windows® XP PRO 32/64 BIT and WIN2003 Server and VISTA support
- Up to 32GB RAM inside the systems reserved for RAM intensive applications
- Huge Windows desktop with up to 32000x32000 pixel depending on the size of the system
- Standard Windows® & X11 applications and SCADA software can be displayed on the wall with no restriction.
- Windows®-based applications can be displayed simultaneously with any other input signals like video and RGB/DVI.

System Availability

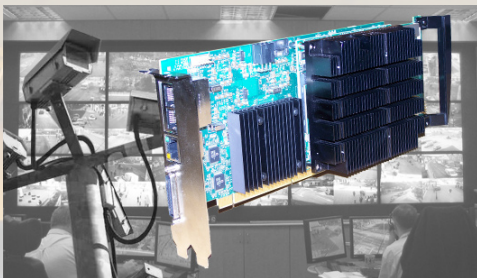


- Redundant power supply units, hot swappable
- New AirFlow technology with 6 hot swappable fans
- Redundant SATA hard disc drives with RAID1, hot swappable
- Disk Imaging and Disaster Recovery, in the event of a system or disk crash, security attack or other fatal failure you can restore your entire controller within minutes - no reinstallation is required
- The NPX 3000 is built in accordance with eyevis ISO 9001 registered facility to meet the specific requirements of each customer and is the best controller for standard control rooms with high availability.

High-end Image Processing with the netpix Controller Series

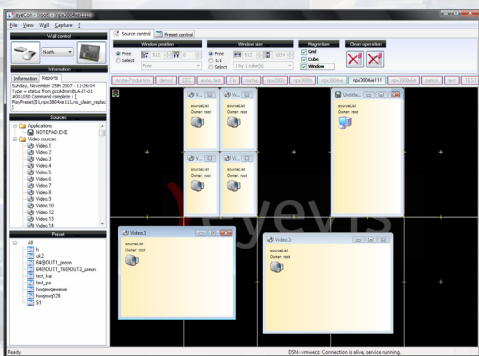
The eyevis netpix series offers advantages that are not to be taken lightly. Thanks to the use of standard operating systems, it is possible to visualize applications and data from the widest variety of sources in unsurpassed display quality. Optional extension cards and software packets make netpix the optimum split controller for large screen systems. By means of different upgrade levels, netpix can be configured individually for each application. netpix supports current operating systems such as Windows 2000/XP and Windows Vista as well as LINUX-based operating systems. This means that netpix can be easily integrated into already existing systems.

Simple IP Video Integration with the IP Decoder Board for netpix Controllers



The IP Streaming Decoder Board offers hardware decoding of universal streaming video signals in real-time with a very low latency. Each Streaming Decoder card can decode up to 32 CIF streams or up to 8 D1 streams. Through a new hardware decoding architecture, each channel can simultaneously decode different codec formats. This flexibility allows large visualisation systems, supporting display grids of up to 64 outputs and a virtually unlimited number of inputs. The key features of the new board also include the ability to select different codecs for each channel; simultaneous display of up to 128 streams in real time, low decoding latency, and scalability.

Perfect Wall Control with the eyecon® Wall Management Software

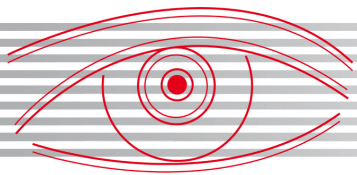


eyevis has developed the eyecon software for the perfect control of your large screen system. eyecon is the wall management software solution that gives your system certain intelligence, many outstanding functionalities and a user-friendly GUI. eyecon is famous for being the leading control software on the market and underlies consequent further development by eyevis to match the latest requirements for perfect visualisation. eyecon is a complete software solution for the simple and perfect control, administration and organisation of large screen displays and all connected signal sources.

Accessories for Coherent Systems



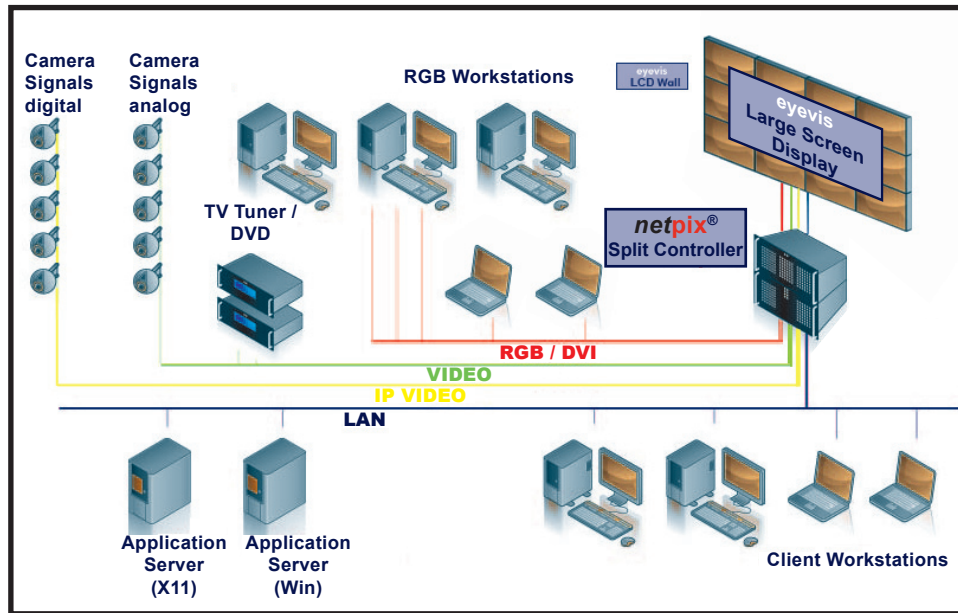
eyevis provides a wide range of accessories for its large screen systems. The range contains different basements for the EC Cube Series, optical DVI cables for perfect signal transmission, Scalers for resolution adjustment, DVI matrix units, and more. In order to fulfil our customers demands as good as possible, we provide several options for the EC Cubes Series. We provide stand-alone cubes ("eyepils"), basements on rails, vibration absorbing basements, dust-proof cube chassis, front service option, automatic double-lamp systems, different screen options, and immersive 120° cube systems. We are also able to realise special solutions for specific situations.



Perfect Function and advanced technology

Technology which functions so perfectly that you do not even notice it is working is indispensable to satisfy the demand placed on high-end large screen systems today. This is especially important when these systems are used in sensitive applications requiring a high degree of security such as control rooms and monitoring centres.

It is precisely for this reason that eyevis has developed the netpix controller series. On the basis of many years of experience, technological advantage and accurate knowledge of the various requirement profiles in this domain, eyevis is highly esteemed by its clients as the ideal partner for such applications.



netpix 2900L Series

- Controller for small and medium-sized control rooms
- 64bit technology with high performance graphic chips.
- Server architecture with the current INTEL XEON QUAD CORE® processors with optional high-availability-features.

netpix3000L Series

- Controller for small and medium-sized control rooms
- 64bit technology with high performance graphic chips.
- Inputs for Video and RGB
- Server architecture with the current INTEL XEON QUAD CORE® processors with optional high-availability-features.

netpix 3000/3800 Series

- High end controller for large screens for controlling up to 32 displays
- 64bit technology with high performance graphic chips.
- Special High Speed Interconnect Bus for the simultaneous presentation of a large number of video, IP Video and RGB/DVI sources on the large screen.
- Simple expandability with various input cards for video, IP Video and RGB/DVI.
- Server architecture with the current INTEL XEON QUAD CORE® processors with optional high-availability-features.
- HD inputs and outputs up to 1920 x 1200 pixels.

netpix 3800XE Series

- High end controller for large screens for controlling up to 64 displays
- Largest number of input possibilities
- 64bit technology with high performance graphic chips.
- Special High Speed Interconnect Bus for the simultaneous presentation of a large number of video, IP Video and RGB/DVI sources on the large screen.
- 16 input card slots for maximum expandability for future upgrades of the system.
- Server architecture with latest INTEL XEON QUAD CORE® processors with optional high-availability-features.
- HD inputs and outputs up to 1920 x 1200 pixels.