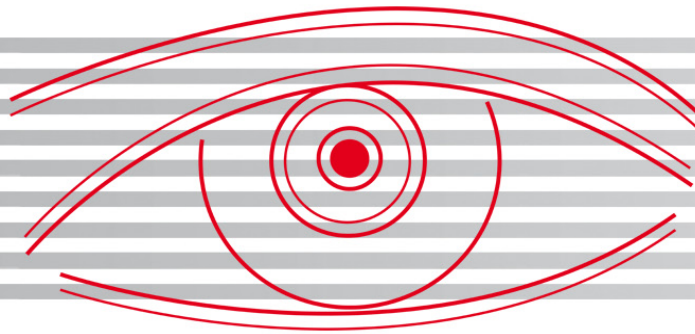


The EC Cube Series by eyevis:

Rear-projection in Perfection for Control Rooms, Security Centres, Master Displays, Information and Communication





Innovative Large Screen Systems for Applications in mission-critical Environments

One of the best large screen systems has become even better. In a proprietary development the new eyevis EC series has been designed especially for continuous operation. eyevis attached much importance on the use of the systems under critical light conditions or other security related problems. For this reason it is worth to rely on the latest generation of a well-established technical solution, which fulfils all necessary requirements.

Innovation and Quality: eyevis Cubes from the EC Series



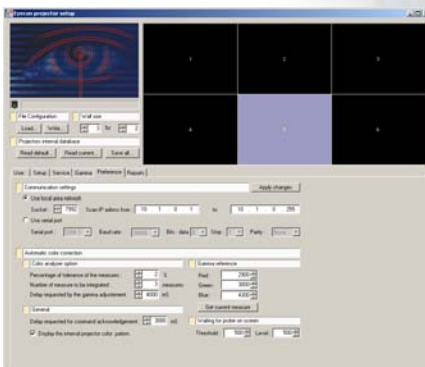
eyevis developed the EC series on the basis of decades of experience with large screen technology in various fields of use. The robust rear-projection modules are available with screen diagonals from 50" to 100", and with image resolutions from XGA, up to SXGA+ and HDTV. The cubes are stackable to build up display walls of almost unlimited size. The seamless design of the cubes avoids annoying gaps between adjacent modules of a video wall. Of course, our cubes have best brightness and contrast characteristics which makes them a first choice for sophisticated applications in the control room sector operating in operating in 24/7 mode.

DLP™-based Image Processing for best Quality and Reliability



Unlike other manufacturers, eyevis relied from the very moment when Texas Instruments brought its DLP™-technology onto market on this revolutionary and superior technology for image processing. The image quality achieved by eyevis cubes through the combination with this high- end-level designed technology simply convinces. Consequently, the new eyevis EC Series is at the cutting edge of DLP™-technology. Hence, we can offer our customers an absolutely well- engineered product that combines years of experience with its practical use and development. No flickering, absolutely clear colours and an image sharpness that shows every detail in perfect brilliance - these are the resulting benefits for our customers.

Comfortable Setup and Colour Adjustment with the eyeCube Software

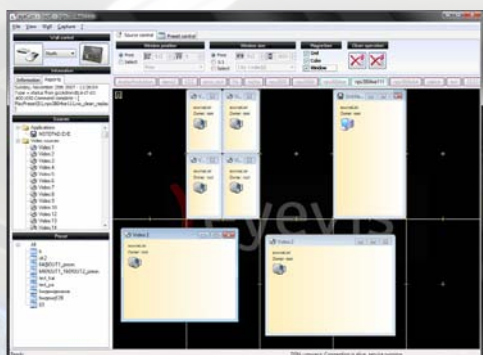


For the setup of the cubes and especially for the colour adjustment we have developed the eyeCube software. The eyeCube software provides all necessary tools for the adjustment of colour, brightness and contrast of the cubes. Unlike other software on the market, colour adjustment is possible over the entire range of the gamma curve for R, G & B. Optionally, there is also a colour analyzer available for an automatic homogenous colour setting. The cubes feature an automatic colour and brightness alignment which compensates for the varying lamp-ageing of the cubes. The software also provides numerous status information of the cubes, such as operating hours and more.

eyevis cubes from the EC series: Engineering that stands any comparison

Cubes from eyevis offer unparalleled availability and reliability, due to the brilliant quality of the product, its modular and strictly practice orientated design and features like double-lamp systems or comprehensive status messages. The result: Many available options, the systems only need a low depth for their integration and are easy and fast to mount and install. In addition to that, the coherent design of the EC Series provides easy and manageable calculation of service and maintenance costs to our customers.

Perfect Wall Control with the eyecon® Wall Management Software



eyevis has developed the eyecon software for the perfect control of your large screen system. eyecon is the wall management software solution that gives your system certain intelligence, many outstanding functionalities and a user-friendly GUI. eyecon is famous for being the leading control software on the market and underlies consequent further development by eyevis to match the latest requirements for perfect visualisation. eyecon is a complete software solution for the simple and perfect control, administration and organisation of large screen displays and all connected signal sources.

netpix® Graphics Controller – Top Performance for Perfect Pictures

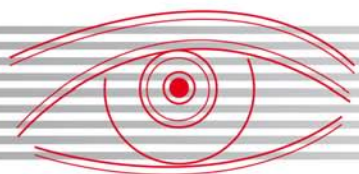


netpix is a network-based graphics controller for the control of large scale or single projections. Thanks to its MultiScreen facility it is possible to generate any kind and size of desktop surface. This gives the user the possibility to create a desktop for the display and control of different sources from network applications, Video and IP Video sources, and data sources. netpix controllers are available in various versions, depending on the number and kind of sources required. For highest availability of the system there are also redundant controllers available. The netpix IP Streaming Video Decoding Board enables the simultaneous decoding of various different IP Video streams in real-time.

Accessories for Coherent Systems



eyevis provides a wide range of accessories for its large screen systems. The range contains different basements for the EC Cube Series, optical DVI cables for perfect signal transmission, Scalers for resolution adjustment, DVI matrix units, and more. In order to fulfil our customers demands as good as possible, we provide several options for the EC Cubes Series. We provide stand-alone cubes ("eyepils"), basements on rails, vibration absorbing basements, dust-proof cube chassis, front service option, automatic double-lamp systems, different screen options, and immersive 120° cube systems. We are also able to realise special solutions for specific situations.



Best quality is our foremost concern; we want to provide our customers with most modern presentation technology at a high-quality level. We always try our best to provide our customers with complete systems that guarantee trouble-free operation. All components of our systems are perfectly compatible to ensure reliable long-time operation. Beginning from the displays solution, to the graphics controller and software, to our range of accessories – whatever you need, we have it – complete perfect visual solutions.

We have set up new standards with all of our realised projects. Below you can find an extract from our reference list

- ABB Power Plant
- Airbus
- Airport Munich
- Audi AG
- Axel-Springer Media Group
- Bayer Business Solutions
- Commerzbank AG
- Daimler AG
- Deutsche Bahn AG
- Deutsche Post AG
- Deutsche Telekom
- DHL
- E.on
- German Bundeswehr
- Lentransgaz
- Movilidad Traffic Control Madrid
- Rheinbahn AG Tramways Düsseldorf
- Siemens Power Generation
- Steria Group
- THALES Group
- UAE Army
- US Army
- Vodafone
- Volkswagen AG
- ZDF (German Television)
- ZF Friedrichshafen



eyevis GmbH

In Laisen 76 • 72766 Reutlingen • Germany
Phone: + 49 (0) 7121 43303 - 0 • Fax: + 49 (0) 7121 43303 - 22
www.eyevis.de • info@eyevis.de
AS at: June 2008 • Subject to change!
Copyright © 2008 eyevis GmbH. All Rights reserved.