

AMT created the first live imaging high resolution TEM CCD camera system in 1992, since then AMT have become a leading worldwide supplier.

Our aim is to provide imaging systems that improve laboratory efficiency and productivity. This is achieved by using low noise cameras with modern CCDs and fast progressive scan readouts. Electronics and software complement the camera characteristics and are tuned to provide the most efficient TEM image acquisition.

We design lenses specifically for TEM applications with outstanding resolution and sensitivity compared to alternative suppliers, this makes our optical solution a serious alternative to fibre optic systems.

For exceptional reliability our systems do not require beam blanking or water cooling, have no bellows or sliding o-rings.

System highlights

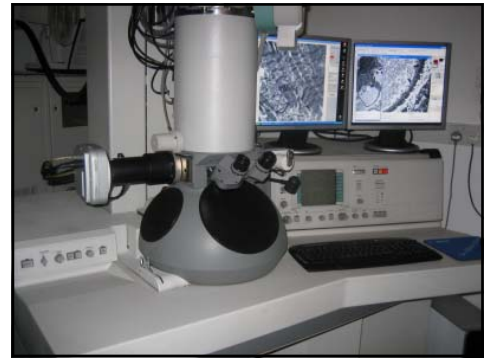
- Resolutions from 1.3Mp to 16Mp
- Bi-Medical, materials or mixed use solutions
- Tomography, montaging & image analysis
- Real-time imaging to 30 frames per second
- No beam blanking or water cooling required
- Cameras which are reliable and easy to use
- Guaranteed lifetime service and customer support
- Guaranteed future upgrade path
- More than 700 installations worldwide



Hitachi H-7650 35mm wide angle



JEOL JEM-2010 Axial high mag



Philips CM120 35mm wide angle

Recommended camera options

1.3 Mega Pixel (1280x1024 pixels)

HRL - wide angle side mounted 35mm, entry level 1K camera for general bio-medical imaging

ER - wide angle side mounted 35mm, cooled high sensitivity 1K camera for demanding bio-medical applications

ERB - high magnification axial mount cooled high sensitivity 1K camera for materials science and diffraction

4 Mega Pixel (2048x2048 pixels)

XR41 - wide angle side mounted 35mm, cooled high sensitivity 2K camera for bio-medical imaging

XR41M - mid mount axial, cooled high sensitivity 2K camera for mixed use bio-medical and materials applications

XR41B - bottom mount axial, cooled high sensitivity 2K camera for materials science and diffraction

New for 2008 - 16 Mega Pixel (4872x3248 pixels)

16000 - wide angle side mounted 35mm, cooled high sensitivity 4K camera for bio-medical imaging

16000M - mid mount axial, cooled 4K camera for mixed use bio-medical and materials applications

16000B - bottom mount axial, cooled 4K camera for materials science and diffraction



Key system features

Easy to use 21CFR11 compliant software ideal for multi-user environments

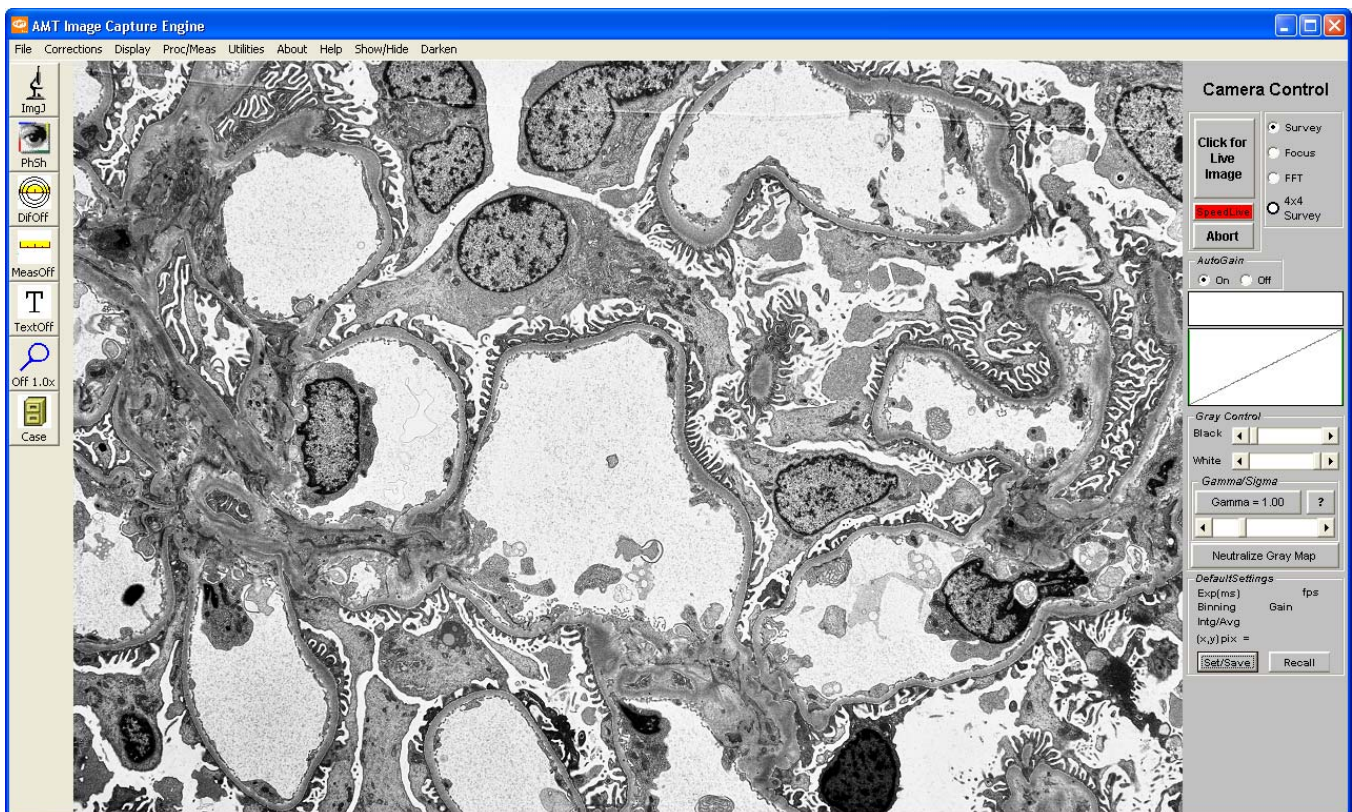
Images saved in industry standard TIFF, JPEG or AVI (video) format

Professional custom lens based system offering superior performance over standard lens based systems with extremely low distortion and very high linearity

Quality DELL computer system with all software included as standard, no hidden extras

Extremely reliable cameras and mechanical interfaces

Guaranteed lifetime service and worldwide customer support



What's included?

- High resolution camera with custom finite conjugate lens
- X-Ray safe TEM flanges and adaptors
- High resolution glass mounted phosphor detector
- High specification DELL computer system with wireless keyboard and mouse
- High quality 19" or 24" TFT monitor (depends on camera choice)
- AMT image acquisition software, license free and available to install on as many computers as you wish with image measurement and montaging features included
- Image J, image analysis software
- Panavue Professional, image stitching software
- Installation and training for all supplied equipment and software
- 12 month on-site warranty and service contract