

IEI IBX POS PC Series

Optional built-in Wireless LAN



IBX-700

IBX-800

IBX-900

Diverse business applications with IBX POS PC

IBX POS PC is the dedicated design computer for Point-of-Service/Sales business. As the compact box solution, IBX POS can be easily integrated with peripherals and external devices in any business environment for any application .

Features

- Broad range of performance levels
- Full range I/O connectors comply with various peripherals & devices.
- LED indicators with powered COM ports
- Front drawing design chasis makes it easy for maintenance
- Ready-to-deploy solution once software are installed
- Industrial-grade design perfect for long hours working

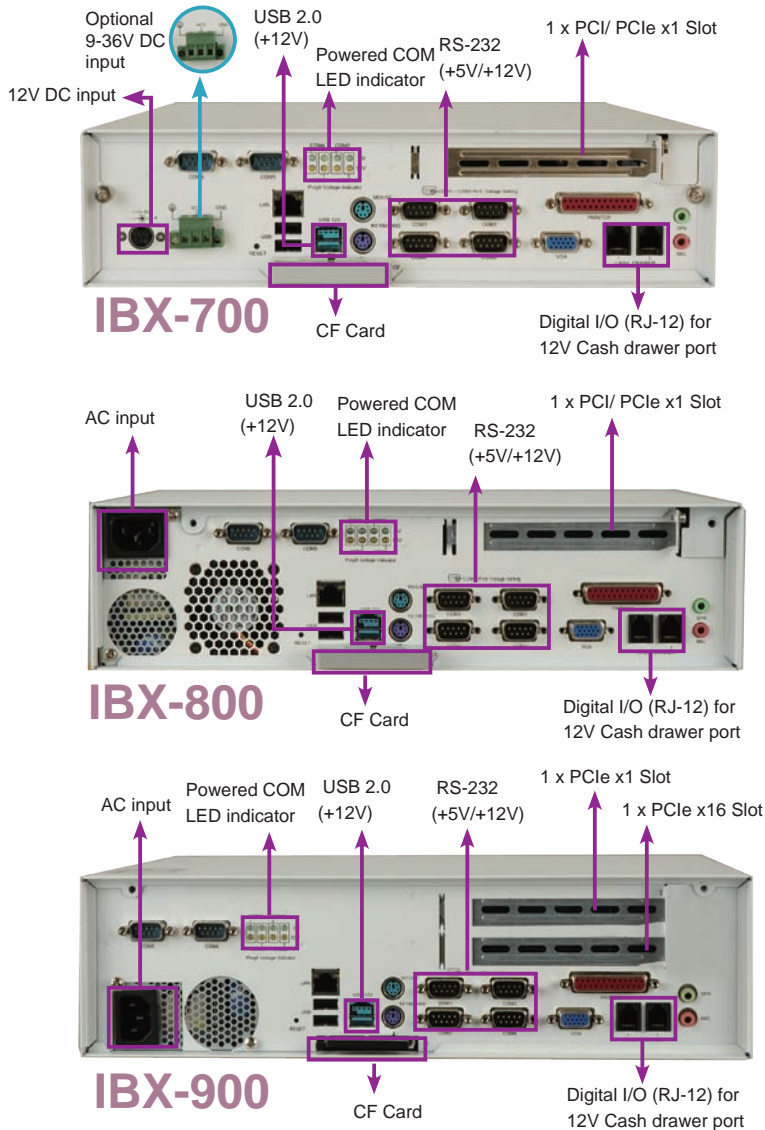


	IBX-700 Slim Fanless	IBX-800 Low Power Dual Core	IBX-900 Dual Core Performance
Dimensions	309 x 300 x 75 mm	309 x 330 x 85 mm	309 x 350 x 95 mm
Generation	Pentium® M		Desktop Core™ 2 Duo
FSB	400 MHz 533/400 MHz	677/ 533 MHz	1066/ 800 MHz
Architecture	Banias Dothan Socket 479 Socket 479	Yonah Merom Socket M Socket M	Conroe LGA 775
Memory	1GB memory equipped, support up to 2GB		1GB memory equipped, support up to 8GB
Platform	 910GML 915GM	 945GM	 945G

- 1 Application Server Platform
- 2 Single Board Computer
- 3 IBX Series POS PC
- 4 AFOLUX POS Panel PC
- 5 Video Capture Card
- 6 KAMIO RISC
- 7 IOVU Open HMI
- 8 VITO Universal Controller
- 9 DINO BLADE
- 10 LCD Product Series
- 11 Embedded System
- 12 Industrial Computer Chassis
- 13 Power Supply
- 14 Peripherals

Comprehensive Connections

IBX POS PC is extensible by the complete I/O and PCI/PCIe riser card which are compatible with several peripherals, such as thermal printer, barcode scanner, cash drawer, MSR card reader, etc.



IBX Expansion Bus Slot Card

Model	Riser Card P/N	PCI	PCIe x 1	PCIe x 16	PCIe Mini Card
IBX-700	PCIR-700-R10	1	N/A	N/A	1 (for WiFi)
	PCIER-700-R10	N/A	1	N/A	1 (for WiFi)
IBX-800	PCIR-800-R10	1	N/A	N/A	1 (for WiFi)
	PCIER-800-R10	N/A	1	N/A	1 (for WiFi)
IBX-900	PCIER-900-R10	N/A	1	1	1 (for WiFi)

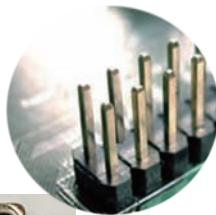


- 1 Application Server Platform
- 2 Single Board Computer
- 3 IBX Series POS PC
- 4 AFOLUX POS Panel PC
- 5 Video Capture Card
- 6 KAMIO RISC
- 7 IOVU Open HMI
- 8 VITO Universal Controller
- 9 DINO BLADE
- 10 LCD Product Series
- 11 Embedded System
- 12 Industrial Computer Chassis
- 13 Power Supply
- 14 Peripherals

Powered I/O

COM with 5V/12VDC output

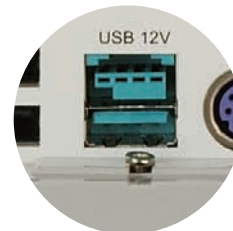
Every IBX POS PC has four powered COM port with standard DB-9 connector. The pin-9 of each COM port is the default power output pin. The output voltage of the powered COM are selectable respectively by opening and shorting the control pins onboard.



power pin

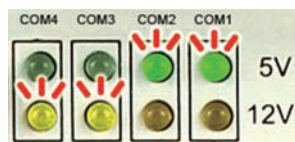
+12V PoweredUSB

The convenient PoweredUSB interface are widely used by peripherals of POS system such as receipt printer, barcode scanner, pin pad, and payment terminal, etc.



LED indicators for powered COM

To prevent device with un-match input voltage be connected mistakenly to the powered COM, each powered COM has a set of LED voltage indicators on the I/O panel. The LEDs show the current output voltage of each powered COM by green(5V) or yellow(12V).



5VDC out: COM1, COM2
12VDC out: COM3, COM4

Easy Maintenance

Front draw-out chassis designed for easy maintenance

For the convenience to maintenance, IBX POS PC introduces front drawing chassis and easy-to-fasten thumb screws. Simply remove the screws on the rear and pull the front panel, it is easy for maintenance anytime anywhere.



1
Application
Server
Platform

2
Single
Board
Computer

3
IBX
Series
POS PC

4
AFOLUX
POS
Panel PC

5
Video
Capture
Card

6
KAMIO
RISC

7
IOVU
Open HMI

8
VITO
Universal
Controller

9
DINO
BLADE

10
LCD
Product
Series




11
Embedded
System

12
Industrial
Computer
Chassis

13
Power
Supply

14
Peripherals

Flexible Storage Support

<p>2.5"/ 3.5" SATA Hard Drive</p>		<p>RAID 0,1 functions IBX POS PC supports flexible data storage, including data division (RAID 0) and data replication (RAID 1) function between two hard drive bays are equipped on IBX-700/800 (2.5" HDD) and IBX-900 (3.5" HDD).</p>
<p>Slim Optical Drive</p>		<p>DVD Combo All IBX POS PC is equipped with space-saving slim DVD combo for software installation and data read/ write.</p>
<p>Rear-access CF card</p>		<p>CF cover protection Since POS is widely used in rugged business environment, the CF card is alternative device for operation system storage that avoids the crash resulting from the external vibration.</p>

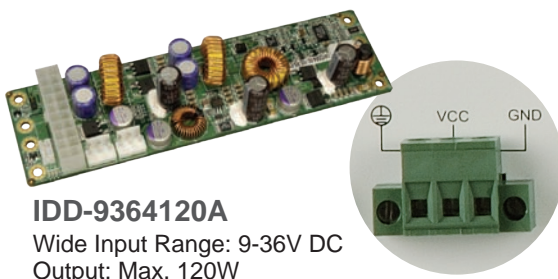
Ready for Mobility

IBX POS PC is ideal for mobile applications and services since it allows to integrate with WiFi module and supports 9-36V DC input.

9-36V DC Input Power Supply

IBX POS PC offers optional 9-36VDC input that make it easy to integrate IBX POS PC anywhere on mobile or outdoor environment.

* Only available for IBX-700 series



IDD-9364120A
Wide Input Range: 9-36V DC
Output: Max. 120W

Wireless Network Access



All IBX POS PC supports 802.11 b/g WiFi module on PCI/ PCIe mini card for remote access. With the wireless network, it's easy to communicate wireless between POS PC to server, handheld device and mobile device, such as Palm PC, wireless scanner, and wireless credit card terminal.



Wireless module on the PCI/ PCIe mini card inside IBX POS PC



Services on Mobile cart

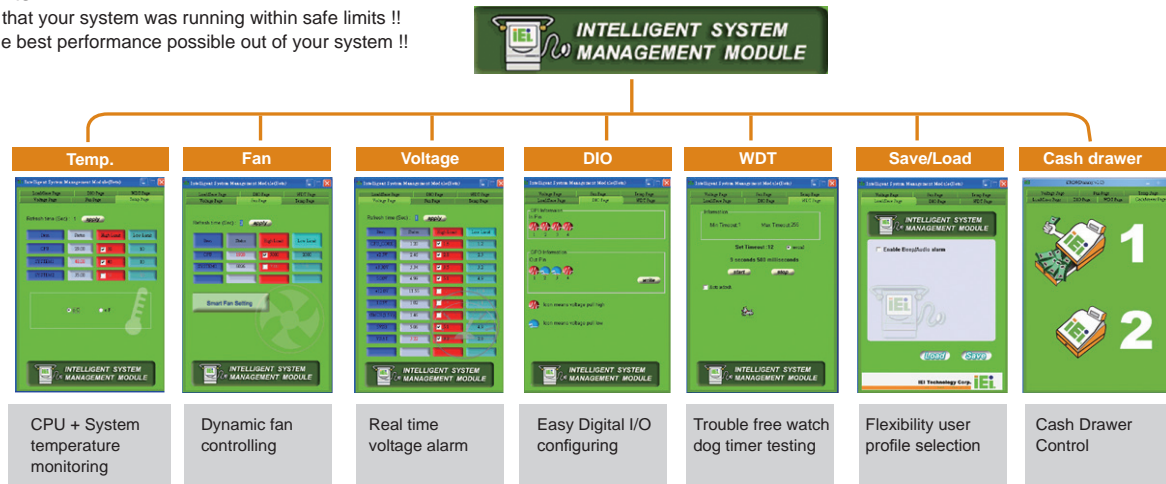
Supervision Utility

System Health Supervision to monitor system status

IEI ISMM is a system health supervision API which utilizes sensor chips on IEI motherboards to track system and CPU temperatures, voltages, cooling fans, WDT and Digital I/O set up status. By quickly catching and feedback system health data, users can prevent disasters such as system instability or damage.

Benefits:

- Know that your system was running within safe limits !!
- Get the best performance possible out of your system !!



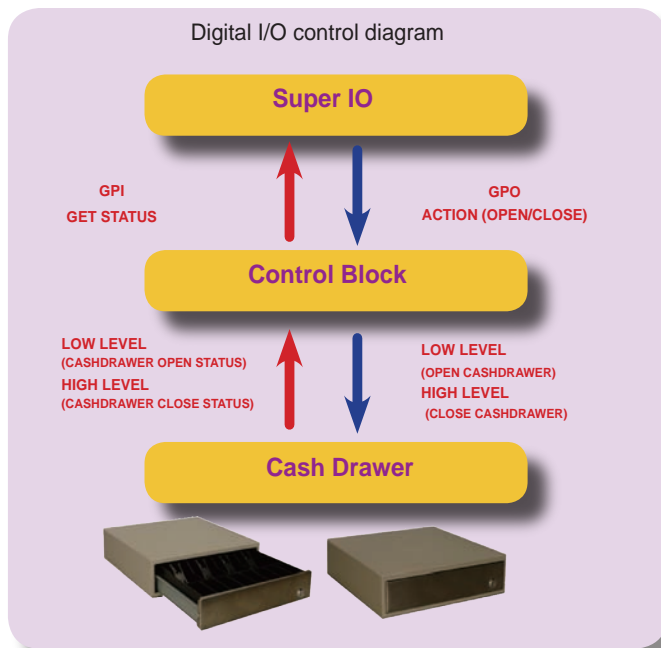
Watchdog timer to prevent system lock-up

The main board features a watchdog timer (WDT) that can generate a system reset if the CPU processing comes to a halt. This feature ensures the system dependability during unattended operation.



Two Digital I/O with 12V power (Cash Drawer Port)

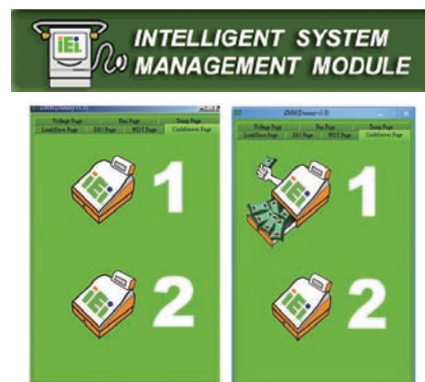
IBX POS PC is equipped with a digital I/O RJ-12 12V port that provides extension for peripherals such as a cash drawer device, lamp, alarms etc.



Cash Drawer RJ-12 Pin Assignments

Pin	Assignment
1	Ground
2	CASH_1 (Digital Out Programmable)
3	Digital IN
4	+12V
5	NC
6	Ground

IEI ISMM cash drawer status monitoring



IEI also provides a quick and easy tool to develop cash drawer application for POS program

Free ISMM API Support

- Application Server Platform
- Single Board Computer
- IBX Series POS PC
- AFOLUX POS Panel PC
- Video Capture Card
- KAMIO RISC
- IOVU Open HMI
- VITO Universal Controller
- DINO BLADE
- LCD Product Series
- Embedded System
- Industrial Computer Chassis
- Power Supply
- Peripherals

Specifications



1
Application
Server
Platform

2
Single
Board
Computer

3
IBX
Series
POS PC

4
AFOLUX
POS
Panel PC

5
Video
Capture
Card

6
KAMIO
RISC

7
IOVU
Open HMI

8
VITO
Universal
Controller

9
DINO
BLADE

10
LCD
Product
Series

11
Embedded
System

12
Industrial
Computer
Chassis

13
Power
Supply

14
Peripherals

Model No.	IBX-700-9103	IBX-700-9153	IBX-800-9452	IBX-900-9454
SBC	POS-9103	POS-9153	POS-9452	POS-9454
CPU Options	Intel® ULV Celeron® M 1GHz / 512KB L2 cache Processor 373	Intel® Celeron® M 1.5GHz/ 1MB L2 cache Processor 370	Intel® Core™ Duo 1.66GHz/ 2MB L2 cache Processor T2300E	Intel® Celeron® D 3.2GHz/ 512KB L2 cache Processor 352 Intel® Pentium® 4 3.4GHz/ 2MB L2 cache Processor 651 Intel® Pentium® Dual-Core 1.8GHz/ 1MB L2 cache Processor E2160
Chipset	Intel® 910GML + ICH6-M	Intel® 915GM + ICH6-M	Intel® 945GM + ICH7-R	Intel® 945G + ICH7-R
Memory	built-in 1GB DDR2 memory system supports 2 x 240 pin Dual channel DDR2 400/533 MHz up to 2GB	built-in 1GB DDR2 memory system supports 2 x 240 pin Dual channel DDR2 400/533 MHz up to 2GB	built-in 1GB DDR2 memory system supports 2 x 240 pin Dual channel DDR2 533/667MHz up to 4GB	built-in 1GB DDR2 memory system supports 2 x 240 pin Dual channel DDR 2 533/667/800MHz up to 8GB
ODD	1 x slim DVD Combo CD-RW 24x, DVD-ROM 8x	1 x slim DVD Combo CD-RW 24x, DVD-ROM 8x	1 x slim DVD Combo CD-RW 24x, DVD-ROM 8x	1 x slim DVD Combo CD-RW 24x, DVD-ROM 8x
HDD	built-in 1 x 80GB 2.5" SATA HDD supports upto 2 x 2.5" HDD	built-in 1 x 80GB 2.5" SATA HDD supports upto 2 x 2.5" HDD	built-in 1 x 80GB 2.5" SATA HDD supports upto 2 x 2.5" HDD	built-in 1 x 160GB 3.5" SATA HDD supports upto 2 x 3.5" HDD
SSD	1 x CF Type II slot	1 x CF Type II slot	1 x CF Type II slot	1 x CF Type II slot
Display	Integrated in Intel® 910GML	Integrated in Intel® 915GM	Integrated in Intel® 945GM	Integrated in Intel® 945G
Extension Slot	Expandable with optional riser card PCIR-700: 1 x PCI, 1 x PCIe MiniCard PCIER-700: 1 x PCIe x 1, 1 x PCIe MiniCard		Expandable with optional riser card PCIR-800: 1 x PCI, 1 x PCIe MiniCard PCIER-800: 1 x PCIe x 1, 1 x PCIe MiniCard	Expandable with optional riser card PCIER-900: 1 x PCIe x 16, 1 x PCIe x 1, 1 x PCIe MiniCard
I/O	Display	1 x VGA	1 x VGA	1 x VGA
	Powered COM	5V or 12V output from pin 9, with LED voltage indicator (COM1-COM4)		5V or 12V output from pin 9, with LED voltage indicator (COM1-COM4)
	COM	2 x RS-232 (COM5 / COM6)		2 x RS-232 (COM5 / COM6)
	LPT	1 x DB-25		1 x DB-25
	PoweredUSB	1 x 12V PoweredUSB		1 x 12V PoweredUSB
	USB	2 x USB 2.0 on front panel 2 x USB 2.0 on I/O panel		2 x USB 2.0 on front panel 2 x USB 2.0 on I/O panel
	Cash Drawer Port (Digital I/O)	2 x RJ-12, 1DI/1DO with 12VDC output		2 x RJ-12, 1DI/1DO with 12VDC output
	LAN	1 x GbE with RJ-45		1 x GbE with RJ-45
	Wireless	Expandable by BTO order with MOQ 802.11b/g with PIFA antenna, PCIe interface		Expandable by BTO order with MOQ 802.11b/g with PIFA antenna, PCIe interface
	KB/MS	1/1 PS2		1/1 PS2
Audio	1 x Line-out, 1 x MIC in		1 x Line-out, 1 x MIC in	
Operation Temperature	0°C ~ 45°C		0°C ~ 45°C	0°C ~ 45°C
Power Input	12VDC in with 63000-FSP0841ADC11118-RS 84W power adaptor 9~36VDC in by IDD-9364120A DC-to-DC module		90V~264VAC in, with ACE-A615A 150W ATX power supply	90V~264VAC in, with ACE-A627A 270W ATX power supply
Dimensions (DxWxH)	309 mm x 300 mm x 75 mm		309 mm x 330 mm x 85 mm	309 mm x 350 mm x 95 mm
Net Weight	3.6 kg		4.3 kg	5.1 kg
EMC / Safety	CE, FCC class B, UL, CCC		CE, FCC class B, UL, CCC	CE, FCC class B, UL, CCC

Ordering Information

• IBX-700 Ordering Information

Part No.	Description	Wireless	Expansions
12VDC in, 910GMLE with Processor 373, with DVD Combo			
IBX-700D-9103-R10-WBOOC/CM373/1GB/80G	POS PC with Intel® ULV Celeron® M 1GHz / 512KB L2 cache processor 373, memory, 2.5" SATA HDD 80GB, DVD combo, 12VDC input, white color, RoHS	N/A	N/A
IBX-700D-9103-R10-WBIGC/CM373/1GB/80G	POS PC with Intel® ULV Celeron® M 1GHz / 512KB L2 cache processor 373, 1GB DDR2 memory, 2.5" SATA HDD 80GB, DVD combo, built-in 802.11b/g wireless with one PCI expansion slot, 12VDC input, white color, RoHS	802.11b/g	PCI
IBX-700D-9103-R10-WBEGC/CM373/1GB/80G	POS PC with Intel® ULV Celeron® M 1GHz / 512KB L2 cache processor 373, 1GB DDR2 memory, 2.5" SATA HDD 80GB, DVD combo, built-in 802.11b/g wireless with one PCIe x1 expansion slot, 12VDC input, white color, RoHS	802.11b/g	PCIe x1
12VDC in, 910GMLE with Processor 373, without DVD Combo			
IBX-700D-9103-R10-WBOOO/CM373/1GB/80G	POS PC with Intel® ULV Celeron® M 1GHz / 512KB L2 cache processor 373, memory, 2.5" SATA HDD 80GB, 12VDC input, white color, RoHS	N/A	N/A
IBX-700D-9153-R10-WSIGO/CM370/1GB/80G	POS PC with Intel® ULV Celeron® M 1GHz / 512KB L2 cache processor 373, 1GB DDR2 memory, 2.5" SATA HDD 80GB, built-in 802.11b/g wireless with one PCI expansion slot, 12VDC input, white color, RoHS	802.11b/g	PCI
IBX-700D-9103-R10-WBEGO/CM373/1GB/80G	POS PC with Intel® ULV Celeron® M 1GHz / 512KB L2 cache processor 373, 1GB DDR2 memory, 2.5" SATA HDD 80GB, built-in 802.11b/g wireless with one PCIe x1 expansion slot, 12VDC input, white color, RoHS	802.11b/g	PCIe x1
12VDC in, 915GM with Processor 370, with DVD Combo			
IBX-700D-9153-R10-WSOOC/CM370/1GB/80G	POS PC with Intel® Celeron® M 1.5GHz / 1MB L2 cache processor 370, 1GB DDR2 memory, 2.5" SATA HDD 80GB, DVD combo, 12VDC input, white color, RoHS	N/A	N/A
IBX-700D-9153-R10-WSIGO/CM370/1GB/80G	POS PC with Intel® Celeron® M 1.5GHz / 1MB L2 cache processor 370, 1GB DDR2 memory, 2.5" SATA HDD 80GB, DVD combo, built-in 802.11b/g wireless with one PCI expansion slot, 12VDC input, white color, RoHS	802.11b/g	PCI
IBX-700D-9153-R10-WSEGC/CM370/1GB/80G	POS PC with Intel® Celeron® M 1.5GHz / 1MB L2 cache processor 370, 1GB DDR2 memory, 2.5" SATA HDD 80GB, DVD combo, built-in 802.11b/g wireless with one PCIe x1 expansion slot, 12VDC input, white color, RoHS	802.11b/g	PCIe x1
12VDC in, 915GM with Processor 370, without DVD Combo			
IBX-700D-9153-R10-WSOOO/CM370/1GB/80G	POS PC with Intel® Celeron® M 1.5GHz / 1MB L2 cache processor 370, 1GB DDR2 memory, 2.5" SATA HDD 80GB, 12VDC input, white color, RoHS	N/A	N/A
IBX-700D-9153-R10-WSEGO/CM370/1GB/80G	POS PC with Intel® Celeron® M 1.5GHz / 1MB L2 cache processor 370, 1GB DDR2 memory, 2.5" SATA HDD 80GB, built-in 802.11b/g wireless with one PCI expansion slot, 12VDC input, white color, RoHS	802.11b/g	PCI
IBX-700D-9153-R10-WSEGO/CM370/1GB/80G	POS PC with Intel® Celeron® M 1.5GHz / 1MB L2 cache processor 370, 1GB DDR2 memory, 2.5" SATA HDD 80GB, built-in 802.11b/g wireless with one PCIe x1 expansion slot, 12VDC input, white color, RoHS	802.11b/g	PCIe x1
9-36VDC in, 910GMLE with Processor 373, with DVD Combo			
IBX-700M-9103-R10-WBOOC/CM373/1GB/80G	POS PC with Intel® ULV Celeron® M 1GHz / 512KB L2 cache processor 373, 1GB DDR2 memory, 2.5" SATA HDD 80GB, DVD combo, 9-36VDC in, white color, RoHS	N/A	N/A
IBX-700M-9103-R10-WBOOC/CM373/1GB/80G	POS PC with Intel® ULV Celeron® M 1GHz / 512KB L2 cache processor 373, 1GB DDR2 memory, 2.5" SATA HDD 80GB, DVD combo, built-in 802.11b/g wireless with one PCI expansion slot, 9-36VDC in, white color, RoHS	802.11b/g	PCI
IBX-700M-9103-R10-WBEGC/CM373/1GB/80G	POS PC with Intel® ULV Celeron® M 1GHz / 512KB L2 cache processor 373, 1GB DDR2 memory, 2.5" SATA HDD 80GB, DVD combo, built-in 802.11b/g wireless with one PCIe x1 expansion slot, 9-36VDC in, white color, RoHS	802.11b/g	PCIe x1
9-36VDC in, 910GMLE with Processor 373, without DVD Combo			
IBX-700M-9103-R10-WBOOO/CM373/1GB/80G	POS PC with Intel® ULV Celeron® M 1GHz / 512KB L2 cache processor 373, 1GB DDR2 memory, 2.5" SATA HDD 80GB, 9-36VDC in, white color, RoHS	N/A	N/A
IBX-700M-9103-R10-WSIGC/CM373/1GB/80G	POS PC with Intel® ULV Celeron® M 1GHz / 512KB L2 cache processor 373, 1GB DDR2 memory, 2.5" SATA HDD 80GB, built-in 802.11b/g wireless with one PCI expansion slot, 9-36VDC in, white color, RoHS	802.11b/g	PCI
IBX-700M-9103-R10-WBEGO/CM373/1GB/80G	POS PC with Intel® ULV Celeron® M 1GHz / 512KB L2 cache processor 373, 1GB DDR2 memory, 2.5" SATA HDD 80GB, built-in 802.11b/g wireless with one PCIe x1 expansion slot, 9-36VDC in, white color, RoHS	802.11b/g	PCIe x1
9-36VDC in, 915GM with Processor 370, with DVD Combo			
IBX-700M-9153-R10-WSOOC/CM370/1GB/80G	POS PC with Intel® Celeron® M 1.5GHz / 1MB L2 cache processor 370, 1GB DDR2 memory, 2.5" SATA HDD 80GB, DVD combo, 9-36VDC input, white color, RoHS	N/A	N/A
IBX-700M-9103-R10-WBIGO/CM373/1GB/80G	POS PC with Intel® Celeron® M 1.5GHz / 1MB L2 cache processor 370, 1GB DDR2 memory, 2.5" SATA HDD 80GB, DVD combo, built-in 802.11b/g wireless with one PCI expansion slot, 9-36VDC input, white color, RoHS	802.11b/g	PCI
IBX-700M-9153-R10-WSEGC/CM370/1GB/80G	POS PC with Intel® Celeron® M 1.5GHz / 1MB L2 cache processor 370, 1GB DDR2 memory, 2.5" SATA HDD 80GB, DVD combo, built-in 802.11b/g wireless with one PCIe x1 expansion slot, 9-36VDC input, white color, RoHS	802.11b/g	PCIe x1
9-36VDC in, 915GM with Processor 370, without DVD Combo			
IBX-700M-9153-R10-WSOOO/CM370/1GB/80G	POS PC with Intel® Celeron® M 1.5GHz / 1MB L2 cache processor 370, 1GB DDR2 memory, 2.5" SATA HDD 80GB, 9-36VDC input, white color, RoHS	N/A	N/A
IBX-700M-9153-R10-WSIGO/CM370/1GB/80G	POS PC with Intel® Celeron® M 1.5GHz / 1MB L2 cache processor 370, 1GB DDR2 memory, 2.5" SATA HDD 80GB, built-in 802.11b/g wireless with one PCI expansion slot, 9-36VDC input, white color, RoHS	802.11b/g	PCI
IBX-700M-9153-R10-WSEGO/CM370/1GB/80G	POS PC with Intel® Celeron® M 1.5GHz / 1MB L2 cache processor 370, 1GB DDR2 memory, 2.5" SATA HDD 80GB, built-in 802.11b/g wireless with one PCIe x1 expansion slot, 9-36VDC input, white color, RoHS	802.11b/g	PCIe x1

- 1 Application Server Platform
- 2 Single Board Computer
- 3 IBX Series POS PC
- 4 AFOLUX POS Panel PC
- 5 Video Capture Card
- 6 KAMIO RISC
- 7 IOVU Open HMI
- 8 VITO Universal Controller
- 9 DINO BLADE
- 10 LCD Product Series
- 11 Embedded System
- 12 Industrial Computer Chassis
- 13 Power Supply
- 14 Peripherals

For other configurations, please contact local distributor or IEL sales representative.

• IBX-800 Ordering Information

Part No.	Description	Wireless	Expansions
90-264VAC in, with DVD Combo			
IBX-800A-9452-R10-WSOOC/T2300E/1GB/80G	POS PC with Intel® Core™ Duo 1.66GHz / 2MB L2 cache processor T2300E, 1GB DDR2 memory, 2.5" SATA HDD 80GB, DVD combo, 90V-264VAC in, 150W power supply, white color, RoHS	N/A	N/A
IBX-800A-9452-R10-WSIGC/T2300E/1GB/80G	POS PC with Intel® Core™ Duo 1.66GHz / 2MB L2 cache processor T2300E, 1GB DDR2 memory, 2.5" SATA HDD 80GB, DVD combo, built-in 802.11b/g wireless with one PCI expansion slot, 90V-264VAC in, 150W power supply, white color, RoHS	802.11b/g	PCI
IBX-800A-9452-R10-WSEGO/T2300E/1GB/80G	POS PC with Intel® Core™ Duo 1.66GHz / 2MB L2 cache processor T2300E, 1GB DDR2 memory, 2.5" SATA HDD 80GB, DVD combo, built-in 802.11b/g wireless with one PCIe x1 expansion slot, 90V-264VAC in, 150W power supply, white color, RoHS	802.11b/g	PCIe x1
90-264VAC in, without DVD Combo			
IBX-800A-9452-R10-WSOOC/T2300E/1GB/80G	POS PC with Intel® Core™ Duo 1.66GHz / 2MB L2 cache processor T2300E, 1GB DDR2 memory, 2.5" SATA HDD 80GB, 90V-264VAC in, 150W power supply, white color, RoHS	N/A	N/A
IBX-800A-9452-R10-WSIGC/T2300E/1GB/80G	POS PC with Intel® Core™ Duo 1.66GHz / 2MB L2 cache processor T2300E, 1GB DDR2 memory, 2.5" SATA HDD 80GB, built-in 802.11b/g wireless with one PCI expansion slot, 90V-264VAC in, 150W power supply, white color, RoHS	802.11b/g	PCI
IBX-800A-9452-R10-WSEGO/T2300E/1GB/80G	POS PC with Intel® Core™ Duo 1.66GHz / 2MB L2 cache processor T2300E, 1GB DDR2 memory, 2.5" SATA HDD 80GB, built-in 802.11b/g wireless with one PCIe x1 expansion slot, 90V-264VAC in, 150W power supply, white color, RoHS	802.11b/g	PCIe x1

• IBX-900 Ordering Information

Part No.	Description	Wireless	Expansions
90-264VAC in, with DVD Combo			
IBX-900A-9454-R10-WSOOC/CD352/1GB/160G	POS PC with Intel® Celeron® D 3.2GHz/ 512KB L2 cache processor 352, 1GB DDR2 memory, one 3.5" SATA HDD 160GB, DVD combo, 90V-264VAC in, 270W power supply, white color, RoHS	N/A	N/A
IBX-900A-9454-R10-WSEGC/CD352/1GB/160G	POS PC with Intel® Celeron® D 3.2GHz/ 512KB L2 cache processor 352, 1GB DDR2 memory, one 3.5" SATA HDD 160GB, DVD combo, built-in 802.11b/g wireless with one PCIe x1 and one PCIe x16 expansion slot, 90V-264VAC in, 270W power supply, white color, RoHS	802.11b/g	PCI x1 PCIe x16
IBX-900A-9454-R10-WSOOC/P651/1GB/160G	POS PC with Intel® Pentium® 4 3.4GHz/ 2MB L2 cache processor 651, 1GB DDR2 memory, one 3.5" SATA HDD 160GB, DVD combo, 90V-264VAC in, 270W power supply, white color, RoHS	N/A	N/A
IBX-900A-9454-R10-WSEGC/P651/1GB/160G	POS PC with Intel® Pentium® 4 3.4GHz/ 2MB L2 cache processor 651, 1GB DDR2 memory, one 3.5" SATA HDD 160GB, DVD combo, built-in 802.11b/g wireless with one PCIe x1 and one PCIe x16 expansion slot, 90V-264VAC in, 270W power supply, white color, RoHS	802.11b/g	PCI x1 PCIe x16
IBX-900A-9454-R10-WSOOC/E2160/1GB/160G	POS PC with Intel® Pentium® Dual-Core 1.8GHz/ 1MB L2 cache processor E2160, 1GB DDR2 memory, one 3.5" SATA HDD 160GB, DVD combo, 90V-264VAC in, 270W power supply, white color, RoHS	N/A	N/A
IBX-900A-9454-R10-WSEGC/E2160/1GB/160G	POS PC with Intel® Pentium® Dual-Core 1.8GHz/ 1MB L2 cache processor E2160, 1GB DDR2 memory, one 3.5" SATA HDD 160GB, DVD combo, built-in 802.11b/g wireless with one PCIe x1 and one PCIe x16 expansion slot, 90V-264VAC in, 270W power supply, white color, RoHS	802.11b/g	PCI x1 PCIe x16
90-264VAC in, without DVD Combo			
IBX-900A-9454-R10-WSOOC/CD352/1GB/160G	POS PC with Intel® Celeron® D 3.2GHz/ 512KB L2 cache processor 352, 1GB DDR2 memory, one 3.5" SATA HDD 160GB, 90V-264VAC in, 270W power supply, white color, RoHS	N/A	N/A
IBX-900A-9454-R10-WSEGO/CD352/1GB/160G	POS PC with Intel® Celeron® D 3.2GHz/ 512KB L2 cache processor 352, 1GB DDR2 memory, one 3.5" SATA HDD 160GB, built-in 802.11b/g wireless with one PCIe x1 and one PCIe x16 expansion slot, 90V-264VAC in, 270W power supply, white color, RoHS	802.11b/g	PCI x1 PCIe x16
IBX-900A-9454-R10-WSOOC/P651/1GB/160G	POS PC with Intel® Pentium® 4 3.4GHz/ 2MB L2 cache processor 651, 1GB DDR2 memory, one 3.5" SATA HDD 160GB, 90V-264VAC in, 270W power supply, white color, RoHS	N/A	N/A
IBX-900A-9454-R10-WSEGO/P651/1GB/160G	POS PC with Intel® Pentium® 4 3.4GHz/ 2MB L2 cache processor 651, 1GB DDR2 memory, one 3.5" SATA HDD 160GB, built-in 802.11b/g wireless with one PCIe x1 and one PCIe x16 expansion slot, 90V-264VAC in, 270W power supply, white color, RoHS	802.11b/g	PCI x1 PCIe x16
IBX-900A-9454-R10-WSOOC/E2160/1GB/160G	POS PC with Intel® Pentium® Dual-Core 1.8GHz/ 1MB L2 cache processor E2160, 1GB DDR2 memory, one 3.5" SATA HDD 160GB, 90V-264VAC in, 270W power supply, white color, RoHS	N/A	N/A
IBX-900A-9454-R10-WSEGO/E2160/1GB/160G	POS PC with Intel® Pentium® Dual-Core 1.8GHz/ 1MB L2 cache processor E2160, 1GB DDR2 memory, one 3.5" SATA HDD 160GB, built-in 802.11b/g wireless with one PCIe x1 and one PCIe x16 expansion slot, 90V-264VAC in, 270W power supply, white color, RoHS	802.11b/g	PCI x1 PCIe x16

Options

	Part No.	Description
IBX-700	IBXCF-P9103-XPE	Windows® XP Embedded OS image for IBX-700-9103, with 1GB CF card
	IBXCF-P9103-WEPOS	Windows® WEPOS OS image for IBX-700-9103, with 1GB CF card
	IBXCF-P9153-XPE	Windows® XP Embedded OS image for IBX-700-9153, with 1GB CF card
	IBXCF-P9153-WEPOS	Windows® WEPOS OS image for IBX-700-9153, with 1GB CF card
	PCIR-700	Riser card for IBX-700 with one PCI and one PCIe mini card slot
IBX-800	IBXCF-P9452-XPE	Windows® XP Embedded OS image for IBX-800-9452, with 1GB CF card
	IBXCF-P9452-WEPOS	Windows® WEPOS OS image for IBX-800-9452, with 1GB CF card
	PCIR-800	Riser card for IBX-800 with one PCI slot and one PCIe mini card slot
	PCIER-800	Riser card for IBX-800 with one PCIe x1 slot and one PCIe mini card slot
IBX-900	IBXCF-P9454-XPE	Windows® XP Embedded OS image for IBX-900-9454, with 1GB CF card
	IBXCF-P9454-WEPOS	Windows® WEPOS OS image for IBX-900-9454, with 1GB CF card
	PCIER-900	Riser card for IBX-900 with one PCIe x16 slot, one PCIe x1 slot and one PCIe mini card slot

Naming Rule

IBX - 700 M - 9103 - R10 - WBOOC // CM373 / 1GB / 80G

A: Design Code	700, 800, 900
B: Power input	A ~ AC in, D ~ 12VDC in, M ~ 9-36VDC in
C: SBC code	
D: Revision number	
E: Configuration code	1st letter - color W ~ white 2nd letter - CPU mounting S ~ socket, B ~ CPU onboard 3rd letter - riser card type O ~ without riser, I ~ PCI riser, E ~ PCIE riser 4th letter - wireless mode O ~ without wireless, N ~ 802.11b/g/n wireless, G ~ 802.11b/g wireless 5th letter - ODD type O ~ without ODD, C ~ DVD combo, D ~ DVD RW
F: CPU code	
G: Memory capacity	
H: Hard drive capacity	