



eneo DPR-2016/500D  
High-end digital recorder  
with pentaplex operation

## High-end recorder with pentaplex operation

The DPR-2016/500D with 16 loop-through channels is the new top model among eneo digital recorders – and its numerous functions target it at professional users. Running on Linux, the recorder delivers high system security and flexibility, and it is also very easy to use. Pentaplex operation allows simultaneous real-time display, recording, playback, backup and remote network access without any loss of performance.

The DPR-2016/500D uses highly efficient MPEG-4 compression and delivers maximum recording speeds of 400 fields per second (PAL). Monitor display is at 25 fields per second (per camera) in real time, and the maximum resolution for display and recording is 720x576 pixels. Playback has a choice of 4-, 3+4-, 9-, 2+8-, 1+12 and 16-channel split views. Automatic multiscreen and alarm notification display are also programmable.

The DPR has a VGA port for PC monitor connection, plus four spot monitor outputs and 16 audio inputs. 12 alarm outputs are available as TTL Open Collector, 4 alarm outputs as relay contacts. Secondary external data storage and RAID systems can be connected via the SCSI ports. A DVD-RW writer is integrated for fast data backup.

Furthermore, the ATM/POS link allows, for instance, integration of POS systems of ID card checking. Extensive search functions by date, event, text and motion or also the so-called "Museum-Search" turn video data retrieval into child's play. The recorder is secured against unauthorised operation by comprehensive security func-

tions such as key lock and the capability to create up to 64 user groups with individual access rights.

A programmable grid screen allows five sensitivity levels to be assigned to the integral motion detector: an alarm is triggered if an object such as luggage is left in a defined area; alternatively, the detector can of course be configured so that an alarm is triggered when an object goes missing, such as a painting in a museum. The hard disk capacity of 500GByte can be upgraded by a total of four removable hard disk drives; the disks are hot swappable in the HDD front slide-in module, i.e. they can be changed in running operation. The DPR-2016 features further include, for instance: standard hard-disk mirroring, three USB 2.0 ports, 2x to 4x digital zoom, two RS-485 interfaces for telemetry control or remote keyboard control, two RS-232 interfaces and Ethernet interface. Operation is user-friendly with jog shuttle.

Any standard software can access the recorder which, of course, is also shipped bundled with the RASplus Software. This powerful software can be configured with up to 64 user-defined surfaces, can integrate site plans for major building complexes, and it can also check alarm events displayed by fire, intrusion or motion detectors ("Pager Event Notification"). A user-friendly screen, easy-to-use search modes for fast image access and the calendar function for flexible preprogramming of recording times round off the whole package.

### Accessories

Art.-No.	Type	Description
71956	HDD-500J	Hard Disk Drive 500GB for DPR-2016
74088	EDC-KBD1	System Keyboard with 3-axis Joystick 12VDC/230VAC
74092	EDC-KBDM-3	System Keyboard w. Joystick, 5" Monitor 12VDC/230VAC, Fastrax Protocol
71902	DVR-MOUSE	USB Mouse for Recorder Series DTR (DXR), DPR and DLR3

## DPR-2016/500D

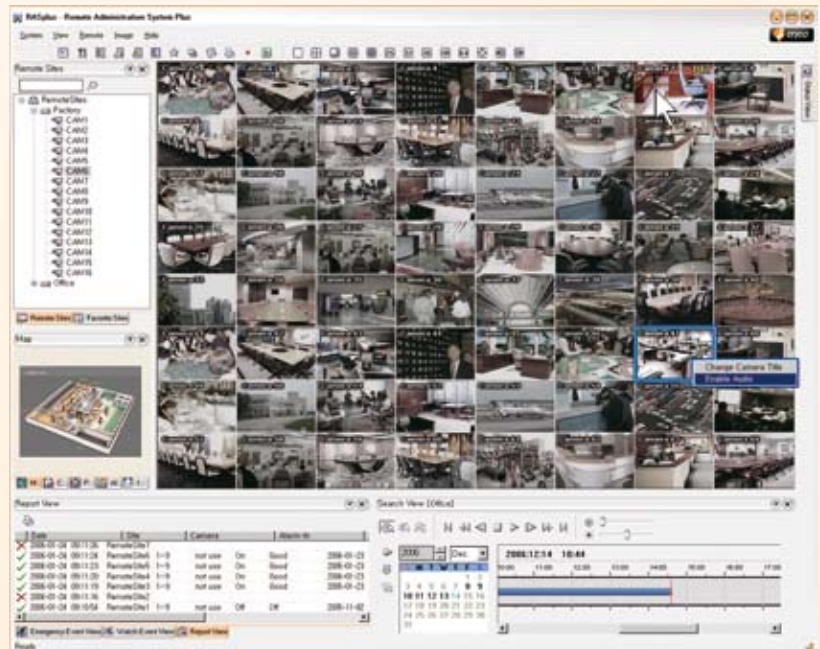
- MPEG-4 Video Compression / Pentaplex Operation
- Recording Speed 400 Fields/Sec. max.
- 4 Removable HDDs max., CD/DVD-RW Writer included
- Video Resolution 720x576 Pixels max.
- Real-Time Mirroring
- Motion Detection / Object Tracker
- 16 Loop-through Inputs / VGA, Comp., S-VHS Outputs
- Audio, Alarms and Auxiliary Inputs / Outputs
- RS-232 / RS-485 Interfaces
- Secondary Storage/Archiving via USB and SCSI Ports
- ATM/POS Text Insertion / 2x to 4x Digital Zoom
- Ethernet Connectivity / IR Remote Control



## RASplus

This powerful software facilitates a wide range of professional applications in network-based video monitoring – allowing the set-up of up to 64 user-defined areas, the integration of site layouts of large building complexes, or the checking of alarm events indicated by fire, intruder or movement sensors (“pager event notification”).

The integrated editor means that your own site maps can be created easily – so it's possible, for example, to install an existing building floor-plan and then place the installed cameras in the relevant locations with just a few mouse clicks. The camera images can then be viewed simply by clicking the mouse. In the case of an alarm, there is also an additional automatic transfer to the relevant camera image. RAS plus is controlled by drag and drop. Extensive search functions, a comfortable, intuitive user interface, improved network stability and automatic firmware updates on the recorders by a server make this software a powerful tool, allowing you to control and manage a complete video monitoring installation.



## Specifications DPR-2016/500D

Event Logs	No limit for alarm-in, motion, video loss, text-in
Search function	Date/Time, Calendar, Event, Motion, Museum, Text and Bookmark
Transmission rate (Network)	100 Fields/sec. (CIF), 50 Fields/sec. (2CIF), PAL
Alarm processing	Programmable automatic alarm multiscreens
Text insertion interface	ATM/POS, 10 chann. max.
Monitor display	Real time: 25 Fields/Sec. (PAL)
Zoom function	2x-4x
Playback	1, 4-, 3+4-, 9-, 2+8-, 1+12-, 16-channel Split, PIP
Pre- alarm / Post-alarm recording	Up to 30min. / Up to 15min.
Serial interface	RS-485 for telemetry control (proved protocols: eneo-Fastrax, Pelco P/D) or remote keyboard control
Activity detection	24x30 grid, Sensitivity levels: 5
Video inputs	16x 1Vp-p, (C)VBS, 75ohms, BNC, looping inputs
Monitor outputs	4x Spot 1Vp-p, (C)VBS, 75ohms, BNC; 1x VGA
Video output	1x 1Vp-p, (C)VBS, 75ohms, BNC; 1x Y/C, Y= 1Vp-p, C= 0.3Vp-p, 75ohms
Audio input / output	16x line-in, RCA socket / 1x line-out, RCA socket
Resolution	CVBS/PAL: 720x576 Pixels; VGA: 720x576, 800x600px. (Display)
Recording speed	400 Fields/sec. at CIF/2CIF (352x288/704x288 Px.), 200 Fields/sec. at 4CIF (704x576 Px.) PAL
Image size	Low: 6,7/8KB, Standard: 15/18KB, High: 30/36KB, Super High: 66,7/80KB (NTSC/PAL). Mode: „High Resolution/4CIF“
Hard disk capacity	500GByte, up to 4 internal HDD's possible
Playback speed	400 Fields/sec. at CIF (336x272 Px. / PAL) and duplex
Secondary Storage	via USB 2.0, SCSI Interface, or built-in CD/DVD-RW writer. Network Data Export: Clip Player, AVI, JPG, BMP
Alarm inputs	16x TTL, programmable as NC/NO
Alarm outputs	12x TTL, open collector (terminal block)
Alarm reset input	1 TTL (terminal block)
Archiving	With EIDE, SCSI and USB HDD's. Real-time mirroring
Menu languages	German, English, Italian, French, Spanish
Ethernet interface	10Base-T/100-Base-TX, RJ-45
Remote Software	For remote administration and search function (RAS plus supplied with the unit)
Interfaces	3x USB, 2x RS-485, 2x RS-232 (ATM/POS, Telemetry, Remote, Configuration or Modem), 1x SCSI port for memory extension
Supply voltage	100VAC~230VAC, 50/60Hz
Power consumption	Approx. 150watts
Temperature range	5°C ~ +40°C
Dimensions (HxWxD) / Weight	177x430x504mm / 16kg
Parts supplied	IR Remote control unit, 19" Rack mount kit, Mains cable, Viewer CD ROM (RAS+), Screw set and flat cable for HDD assy, Manuals