

# TeleEye

## Video Recording Transmitter | RX Series



# RX



## No compromise on fast video transmission and DVD-quality recording

**TeleEye** RX carries a range of professional digital video recording transmitters, which is designed to operate on diverse network environment and fully utilize the existing network bandwidth with optimal performance. Incorporated with revolutionary multi-rate video coding technology (SMAC-M), the gold-award winning **TeleEye** RX delivers truly "no compromise" on both efficient video transmission and excellent DVD quality recording performance.

With built-in CD-writer, removable hard drive and composite video output design, **TeleEye** RX makes recording, storage, retrieval and video monitoring much simple and flexible. **TeleEye** RX is one of the first video recording transmitters in the world in compliance of the recognized British Code of Practice BS 8418:2003.

For high performance video recording and visual alarm verification solution, **TeleEye** RX is your right choice!

# TeleEye

[www.TeleEye.com](http://www.TeleEye.com)

# RX Series | Video Recording Transmitter

## Features:

- Multi-rate Video Coding Technology
- Flexible connections: LAN, ADSL, ISDN, PSTN & mobile network...
- Dual connectivity: Simultaneous TCP/IP & dial-up connections
- Video transmission up to 100/120fps on LAN
- Recording up to 50/60fps at D1 & 200/240fps at CIF
- Triplex operation: simultaneous monitoring, recording & playback
- Up to 16 video & alarm input models
- Support both static & dynamic IP
- Built-in web server
- Independent remote viewers
- Mobile video monitoring with M-303
- Single- & multi-site monitoring
- Live video on web
- Remote audio transmission
- Compliance with BS 8418:2003
- Sophisticated event management
- System arm/disarm
- Pre- & post-alarm video recording
- Tamper & power interruption detection
- Entry/exit zone configurable on all alarm inputs
- Composite video output with OSD menus
- Video footage extraction through CD writer
- Compatibility with popular telemetry protocols
- Unlimited video storage expansion

## Comprehensive Product Family

**TeleEye** RX Series holds two lines of video recording transmitter, a network storage extension unit and application software to cater different applications.



### RX360 Series

High performance video recording transmitter with built-in CD-writer and removable hard drive for standalone and remote operations.

### RX330 Series

All-in-one triplex operating system supporting up to two internal hard drives and a composite video output design.

### RX-SE

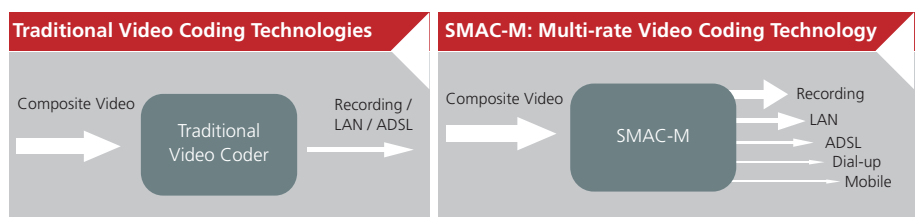
Network storage extension unit to increase recording capacity of RX360 and RX330 Series for long period recording requirement.

## Multi-rate Video Coding Technology

Incorporated with proprietary compression video technology, namely Multi-rate Scalable Motion Adaptive Video Coder (SMAC-M), **TeleEye** RX digitally compresses videos and generates independent data streams to cater for efficient transmission and high resolution recording.

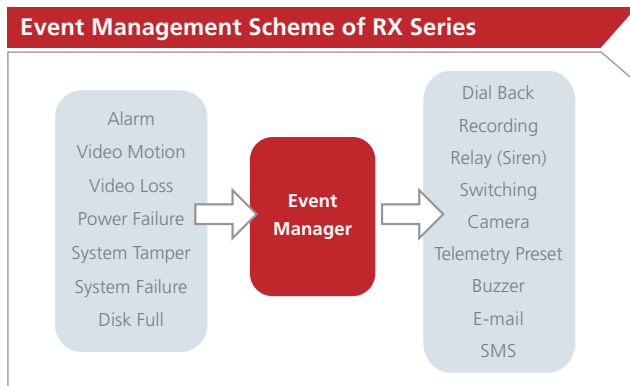
Seamless video transmission by **TeleEye** RX can be performed in low to medium bandwidth communication networks including ADSL, ISDN PSTN & mobile; whilst DVD-quality videos can be transmitted through LAN and recorded into its local hard drive with optimum speed at 50/60fps at D1 resolution. Real time recording (200/240fps) on all video channels can be achieved at CIF resolution.

SMAC-M compresses better and records 60% longer than MPEG-4 at the same picture resolution, quality and frame rate. This saves HDD cost and reduces management headaches.



## Sophisticated Event Management

**TeleEye** RX provides professional and real life security control of premises with its sophisticated event management scheme. It responds to wide range of events triggered by external alarm sensor, video motion, power interruption and tamper. There is an arm/disarm control for the event management mechanism. Every external alarm input is configurable with an individual entry/exit delay, fire zone and tamper detection setting. Various actions like sending video back to a designated receiving PC, video recording, email notification, etc. can be pre-set for different events.



## Quick Video Extraction

With a built-in CD-writer, video footage stored inside **TeleEye** RX can be easily extracted for evidential purposes. Recorded video can be backed up in CD and played back in any PC without any special software. **TeleEye** RX can also extract video remotely without the need being to the site.

## Versatile Telemetry Equipment Control

**TeleEye** RX works well with a wide range of telemetry systems and speed domes available in the marketplace like **TeleEye** DM, Pelco, Panasonic, VCL.... The system can remotely control the camera to pan, tilt and zoom for detailed viewing, follow actions of suspects and survey key points.

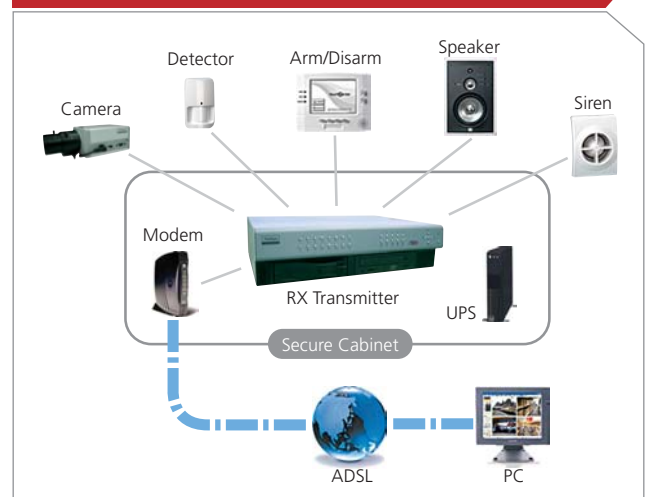
## Low Cost Dynamic IP Internet Connection

**TeleEye** RX incorporated with the Group's proprietary **sureLINK** technology which allows low cost dynamic IP Internet connection. Users can obtain real time video by just using their sub-domain names anytime around the world.

## Professional Visual Alarm Verification Solution

**TeleEye** RX is designed to fully comply with the British Standard BS 8418:2003, providing professional remote monitoring and visual alarm verification solution to central monitoring stations. Features conforming to BS 8418 standard include tamper and power failure detection, data retention, system arm/disarm setting, entry/exit zone configuration, connection authentication and many more.

### BS 8418:2003 Compliant Configuration



## Live Video on Web

All **TeleEye** RX comes with built-in web servers. Users can connect the transmitter to record and playback video with a standard web browser. By using **Cyber TeleEye** Web Video Solution, users can add live video onto existing web sites.



## Grand Award Winning Products

**TeleEye** RX won the Grand and Gold Award (Security Category) in the Hong Kong Electronics Fair 2006, the largest electronic product exhibitions in Asia and second largest in the world for Outstanding Innovation and Technology Product.



**TeleEye RX Series Video Recording Transmitters**



**RX364 / 368 / 3616**

**Standalone & Remote Viewing & Recording**

- Removable hard drive for flexible recording expansion
- Built-in CD-writer for fast video extraction
- Video recording up to 200/240fps at CIF resolution
- Independent remote viewers



**RX334 / 338 / 3316**

**Standalone & Remote Viewing & Recording**

- Supporting up to 2 internal hard drives for enhancing recording capacity
- Simultaneous monitoring, recording & playback
- Video recording rate up to 200/240fps at CIF resolution



**RX-SE**

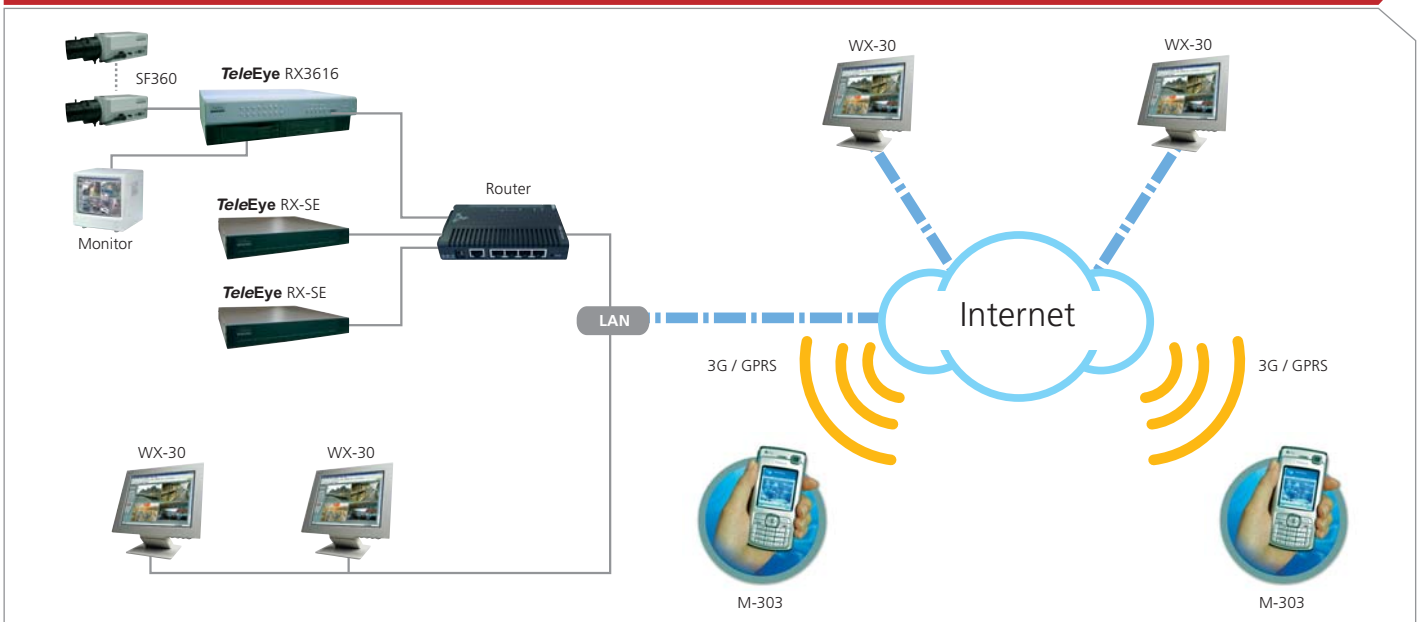
**Network Storage Extension**

- Expanding storage capacity for RX
- Scalable architecture design

**RX-SE Specification**

<b>COMMUNICATION</b>	NETWORK	RJ-45, 10/100 base-T ethernet (auto-sensing)
	RS232 PORT	RS-232C: DB-9 male, asynchronous, 8 data bits, 1 stop bit, no parity, 9.6k-115.2kbps, hardware flow control
<b>HARDDISK</b>	TYPE	IDE interface, internal x 2
<b>POWER</b>	VOLTAGE	12V DC
	MAX. RATING	55W
<b>OPERATING ENVIRONMENT</b>	AMBIENT TEMPERATURE	5°C - 45°C
	RELATIVE HUMIDITY	< 85% (no condensation)
<b>MECHANICAL DESIGN</b>	DIMENSION	400 mm x 380 mm x 65 mm
	WEIGHT	3.5 kg

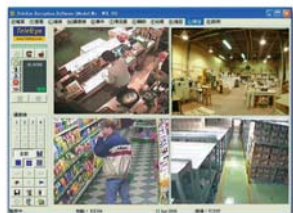
**TeleEye RX Standalone Viewing, Recording & Remote Video Transmission**



# Product Specification

MODEL		RX364	RX368	RX3616	RX334	RX338	RX3316
<b>VIDEO INPUT</b>	STANDARD	(P): PAL/CCIR, 625 lines, 25 frames per second (N): NTSC/EIA, 525 lines, 30 frames per second composite video, 1Vp-p, BNC	(P): PAL/CCIR, 625 lines, 25 frames per second (N): NTSC/EIA, 525 lines, 30 frames per second composite video, 1Vp-p, BNC	(P): PAL/CCIR, 625 lines, 25 frames per second (N): NTSC/EIA, 525 lines, 30 frames per second composite video, 1Vp-p, BNC	(P): PAL/CCIR, 625 lines, 25 frames per second (N): NTSC/EIA, 525 lines, 30 frames per second composite video, 1Vp-p, BNC	(P): PAL/CCIR, 625 lines, 25 frames per second (N): NTSC/EIA, 525 lines, 30 frames per second composite video, 1Vp-p, BNC	(P): PAL/CCIR, 625 lines, 25 frames per second (N): NTSC/EIA, 525 lines, 30 frames per second composite video, 1Vp-p, BNC
	NO. OF CHANNELS	4	8	16	4	8	16
<b>VIDEO OUTPUT</b>	STANDARD	(P): PAL/CCIR, 625 lines, 25 frames per second (N): NTSC/EIA, 525 lines, 30 frames per second composite video, 1Vp-p, BNC	(P): PAL/CCIR, 625 lines, 25 frames per second (N): NTSC/EIA, 525 lines, 30 frames per second composite video, 1Vp-p, BNC	(P): PAL/CCIR, 625 lines, 25 frames per second (N): NTSC/EIA, 525 lines, 30 frames per second composite video, 1Vp-p, BNC	(P): PAL/CCIR, 625 lines, 25 frames per second (N): NTSC/EIA, 525 lines, 30 frames per second composite video, 1Vp-p, BNC	(P): PAL/CCIR, 625 lines, 25 frames per second (N): NTSC/EIA, 525 lines, 30 frames per second composite video, 1Vp-p, BNC	(P): PAL/CCIR, 625 lines, 25 frames per second (N): NTSC/EIA, 525 lines, 30 frames per second composite video, 1Vp-p, BNC
	NO. OF CHANNELS	1	1	1	1	1	1
<b>STANDALONE OPERATION</b>	DISPLAY SCREEN	full screen, quad screen 3 x 3 screen	full screen, quad screen, 3 x 3 screen	full screen, quad screen 3 x 3 screen, hex screen	full screen, quad screen 3 x 3 screen	full screen, quad screen, 3 x 3 screen, hex screen	full screen, quad screen, 3 x 3 screen, hex screen
	DISPLAY FRAME RATE	25/30fps D1, 100/120fps CIF	25/30fps D1, 100/120fps CIF, 200/240fps 3x3	25/30fps D1, 100/120fps CIF, 200/240fps 3x3, 400/480fps QCIF	25/30fps D1, 100/120fps CIF	25/30fps D1, 100/120fps CIF, 200/240fps 3x3	25/30fps D1, 100/120fps CIF, 200/240fps 3x3, 400/480fps QCIF
<b>RECORDING</b>	TYPE	system configuration, operation, audit trail	system configuration, operation, audit trail	system configuration, operation, audit trail	system configuration, operation, audit trail	system configuration, operation, audit trail	system configuration, operation, audit trail
	MODE	manual, schedule, event-driven	manual, schedule, event-driven	manual, schedule, event-driven	manual, schedule, event-driven	manual, schedule, event-driven	manual, schedule, event-driven
<b>COMMUNICATION</b>	HD TYPE	IDE interface, removable	IDE interface, removable	IDE interface, internal x 2	IDE interface, internal x 2	IDE interface, internal x 2	IDE interface, internal x 2
	MAX. RECORDING RATE	(P): 25fps at 720 x 576 pixels; 100fps at 360 x 288 pixels (N): 30fps at 720 x 480 pixels; 120fps at 360 x 240 pixels	(P): 50fps at 720 x 576 pixels; 200fps at 360 x 288 pixels (N): 60fps at 720 x 480 pixels; 240fps at 360 x 240 pixels	(P): 50fps at 720 x 576 pixels; 100fps at 360 x 288 pixels (N): 30fps at 720 x 480 pixels; 120fps at 360 x 240 pixels	(P): 25fps at 720 x 576 pixels; 100fps at 360 x 288 pixels (N): 30fps at 720 x 480 pixels; 120fps at 360 x 240 pixels	(P): 50fps at 720 x 576 pixels; 200fps at 360 x 288 pixels (N): 60fps at 720 x 480 pixels; 240fps at 360 x 240 pixels	(P): 50fps at 720 x 576 pixels; 200fps at 360 x 288 pixels (N): 60fps at 720 x 480 pixels; 240fps at 360 x 240 pixels
<b>CD WRITER</b>	PLAYBACK	Forward, Backward, Pause, Step Forward, x10 Fast Forward	Forward, Backward, Pause, Step Forward, x10 Fast Forward	Forward, Backward, Pause, Step Forward, x10 Fast Forward	Forward, Backward, Pause, Step Forward, x10 Fast Forward	Forward, Backward, Pause, Step Forward, x10 Fast Forward	Forward, Backward, Pause, Step Forward, x10 Fast Forward
	NETWORK	RJ-45, 10/100 base-T ethernet (auto-sensing)	RJ-45, 10/100 base-T ethernet (auto-sensing)	RJ-45, 10/100 base-T ethernet (auto-sensing)	RJ-45, 10/100 base-T ethernet (auto-sensing)	RJ-45, 10/100 base-T ethernet (auto-sensing)	RJ-45, 10/100 base-T ethernet (auto-sensing)
<b>AUDIO</b>	CONCURRENT USERS	6 (independent)	6 (independent)	6 (independent)	6 (independent)	6 (independent)	6 (independent)
	sureLINK	support Internet connection assigned with dynamic IP address	support Internet connection assigned with dynamic IP address	support Internet connection assigned with dynamic IP address	support Internet connection assigned with dynamic IP address	support Internet connection assigned with dynamic IP address	support Internet connection assigned with dynamic IP address
<b>EVENT HANDLING</b>	MAX. TRANSMISSION FRAME RATE	25/30fps D1, 50/60fps CIF	25/30fps D1, 100/120fps CIF	25/30fps D1, 100/120fps CIF	25/30fps D1, 100/120fps CIF	25/30fps D1, 100/120fps CIF	25/30fps D1, 100/120fps CIF
	WEB SERVER	Built-in	Built-in	Built-in	Built-in	Built-in	Built-in
<b>RELAY SWITCH</b>	MODEM PORT	RS-232C: DB-9 male, asynchronous, 8 data bits, 1 stop bit, no parity, 9.6k-115.2kbps, hardware flow control	RS-232C: DB-9 male, asynchronous, 8 data bits, 1 stop bit, no parity, 9.6k-115.2kbps, hardware flow control	RS-232C: DB-9 male, asynchronous, 8 data bits, 1 stop bit, no parity, 9.6k-115.2kbps, hardware flow control	RS-232C: DB-9 male, asynchronous, 8 data bits, 1 stop bit, no parity, 9.6k-115.2kbps, hardware flow control	RS-232C: DB-9 male, asynchronous, 8 data bits, 1 stop bit, no parity, 9.6k-115.2kbps, hardware flow control	RS-232C: DB-9 male, asynchronous, 8 data bits, 1 stop bit, no parity, 9.6k-115.2kbps, hardware flow control
	TELEMETRY CONTROL	keyboard / camera port: RS-422/485: 2-way terminal, asynchronous, 8 data bits, 1 stop bit, no parity, 2.4-19.2kbps	keyboard / camera port: RS-422/485: 2-way terminal, asynchronous, 8 data bits, 1 stop bit, no parity, 2.4-19.2kbps	keyboard / camera port: RS-422/485: 2-way terminal, asynchronous, 8 data bits, 1 stop bit, no parity, 2.4-19.2kbps	keyboard / camera port: RS-422/485: 2-way terminal, asynchronous, 8 data bits, 1 stop bit, no parity, 2.4-19.2kbps	keyboard / camera port: RS-422/485: 2-way terminal, asynchronous, 8 data bits, 1 stop bit, no parity, 2.4-19.2kbps	keyboard / camera port: RS-422/485: 2-way terminal, asynchronous, 8 data bits, 1 stop bit, no parity, 2.4-19.2kbps
<b>POWER</b>	USB	USB2.0, 12Mbps	USB2.0, 12Mbps	USB2.0, 12Mbps	USB2.0, 12Mbps	USB2.0, 12Mbps	USB2.0, 12Mbps
	TYPE	Built-in	Built-in	Built-in	Built-in	Built-in	Built-in
<b>OPERATING ENVIRONMENT</b>	INPUT	1 channel, RCA, line level	2 channels, RCA, line level	1 channel, RCA, line level	1 channel, RCA, line level	2 channels, RCA, line level	2 channels, RCA, line level
	OUTPUT	input impedance: 30kΩ, frequency: 200-3500Hz PA / output: 1 channel, RCA, line level; output impedance: 600Ω, frequency: 200-3500Hz	input impedance: 30kΩ, frequency: 200-3500Hz PA / output: 1 channel, RCA, line level; output impedance: 600Ω, frequency: 200-3500Hz	input impedance: 30kΩ, frequency: 200-3500Hz PA / output: 1 channel, RCA, line level; output impedance: 600Ω, frequency: 200-3500Hz	input impedance: 30kΩ, frequency: 200-3500Hz PA / output: 1 channel, RCA, line level; output impedance: 600Ω, frequency: 200-3500Hz	input impedance: 30kΩ, frequency: 200-3500Hz PA / output: 1 channel, RCA, line level; output impedance: 600Ω, frequency: 200-3500Hz	input impedance: 30kΩ, frequency: 200-3500Hz PA / output: 1 channel, RCA, line level; output impedance: 600Ω, frequency: 200-3500Hz
<b>MECHANICAL DESIGN</b>	EVENT TYPE	external alarm, tamper, video motion detection, video loss, power interruption, disk full, system failure	external alarm, tamper, video motion detection, video loss, power interruption, disk full, system failure	external alarm, tamper, video motion detection, video loss, power interruption, disk full, system failure	external alarm, tamper, video motion detection, video loss, power interruption, disk full, system failure	external alarm, tamper, video motion detection, video loss, power interruption, disk full, system failure	external alarm, tamper, video motion detection, video loss, power interruption, disk full, system failure
	ACTION TYPE	buzzer, dial back, local recording, relay control, email notification, camera setting, telemetry preset, SMS	buzzer, dial back, local recording, relay control, email notification, camera setting, telemetry preset, SMS	buzzer, dial back, local recording, relay control, email notification, camera setting, telemetry preset, SMS	buzzer, dial back, local recording, relay control, email notification, camera setting, telemetry preset, SMS	buzzer, dial back, local recording, relay control, email notification, camera setting, telemetry preset, SMS	buzzer, dial back, local recording, relay control, email notification, camera setting, telemetry preset, SMS
<b>MECHANICAL DESIGN</b>	EXTERNAL ALARM INPUTS	16x, NC/NO	16x, NC/NO	16x, NC/NO	16x, NC/NO	16x, NC/NO	16x, NC/NO
	NO. OF CHANNELS	4	4	4	4	4	4
<b>MECHANICAL DESIGN</b>	MAX. RATING	24V AC, 1000mA	24V AC, 1000mA	24V AC, 1000mA	24V AC, 1000mA	24V AC, 1000mA	24V AC, 1000mA
	VOLTAGE	12V DC	12V DC	12V DC	12V DC	12V DC	12V DC
<b>MECHANICAL DESIGN</b>	MAX. RATING	50W	55W	70W	60W	65W	80W
	AMBIENT TEMPERATURE	5°C - 40°C	5°C - 40°C	5°C - 40°C	5°C - 40°C	5°C - 40°C	5°C - 40°C
<b>MECHANICAL DESIGN</b>	RELATIVE HUMIDITY	< 85% (no condensation)	< 85% (no condensation)	< 85% (no condensation)	< 85% (no condensation)	< 85% (no condensation)	< 85% (no condensation)
	DIMENSION	400 mm x 365 mm x 120 mm	400 mm x 365 mm x 120 mm	400 mm x 365 mm x 120 mm	400 mm x 380 mm x 65 mm	400 mm x 380 mm x 65 mm	400 mm x 380 mm x 65 mm
<b>MECHANICAL DESIGN</b>	WEIGHT	6.5 kg	6.7 kg	6.7 kg	3.2 kg	3.4 kg	3.4 kg
	WEIGHT	6.5 kg	6.7 kg	6.7 kg	3.2 kg	3.4 kg	3.4 kg

# TeleEye Application Software Program



## Single-site Monitoring

**TeleEye** Single-site Reception Software (WX-30) allows connection to **TeleEye** RX via TCP/IP or PSTN.

- Digital video recording and intelligent playback search
- Automatic video recording on event
- Electronic patrol & comprehensive event log



## Multi-site Monitoring

**TeleEye** Multi-site Monitoring Software (WX-M16) allows connections up to 16 transmitters or cameras simultaneously via LAN or the Internet.

- Up to 16 sites/cameras monitoring
- Network scalable configurations
- Digital video recording & electronic patrol

\* Supports RX360 Series only



## Central Monitoring Station

**TeleEye** Central Monitoring (CMS01) Station offers central monitoring station managers new level of management control and so offering enhanced services to their clients.

- Design for multiple-site, multiple-user environment
- Assignable authority rights for individual users
- Comprehensive site database, including key holder information, floor plan, reference images...
- Sophisticated event and activity logging
- British Standard BS 8418 compliance



## Mobile Video Monitoring

**TeleEye** M-monitoring Solution (M-303) gives you real time video viewing with your existing mobile phone.

- Video transmission: 3G, GPRS, EDGE, HSDPA,...
- Event status

## Recording Size Requirements on TeleEye RX Video Recording Transmitters

Model	D1: 720 x 576		CIF: 360 x 288	
	Frame Rate: (fps)	Size per day (GB)	Frame Rate (fps)	Size per day (GB)
RX334 / RX364	25	25	100	20
RX334 / RX364	4	8	4	2
RX338 / RX368	50	50	200	40
RX338 / RX368	8	15	8	4
RX3316 / RX3616	50	65	200	50
RX3316 / RX3616	16	30	16	8

Remark: The above calculation is based on PAL video standard and recording of all cameras with moderate motion at medium quality setting. Actual recording size required is subject to actual camera situation.

## PC Requirements

	WX-30	WX-M16	CMS01
CPU:	Pentium IV 2.4GHz or above		
RAM:	512 MB or above		
HDD:	1GB of free disk space or above		
Display:	1024x768, true colour		
OS:	MS Windows 2000, XP		

**TeleEye**

www.TeleEye.com

## TeleEye Group

Signal Communications Limited

16/F, Millennium City 3, 370 Kwun Tong Road, Kowloon, Hong Kong  
 International: (852) 2995 5996 Hong Kong: (852) 2995 5992 Fax: (852) 2995 5901  
 Email: info@TeleEye.com Web: www.TeleEye.com

**TeleEye Europe Ltd.**  
 Tel: (44) 118-953-3707  
 Fax: (44) 118-953-3708  
 Email: ukinfo@TeleEye.com

**TeleEye (S) Pte Ltd.**  
 Tel: (65) 6745-3921  
 Fax: (65) 6742-1965  
 Email: sales@TeleEye.com.sg

**TeleEye Hrvatska**  
 Tel: (385) 52-383-101  
 Fax: (385) 52-383-101  
 Email: info@TeleEye.com.hr  
 Web: www.TeleEye.com.hr

**CAMERIO Japan, Inc.**  
 Tel: (81) 42-742-2690  
 Fax: (81) 42-742-2616  
 Email: info@CAMERIO.co.jp

**TeleEye Digital Technology (Shenzhen) Co., Ltd.**  
 Tel: (86) 755-2671-2122  
 Fax: (86) 755-2671-2287  
 Email: info@TeleEye.com.cn

**TeleEye (Mauritius) Ltd.**  
 Tel: (230) 686 5238  
 Fax: (230) 698 2179  
 Email: info@TeleEye.com.mu  
 Web: www.TeleEye.com.mu

**TeleEye Philippines Inc.**  
 Tel: (63) 2-3650897  
 Fax: (63) 2-3651446  
 Email: contact@TeleEye.com.ph  
 Web: www.TeleEye.com.ph